

TEST REPORT

Report No.: **SZ2220421-15709E**

Date: May 10, 2022

Page 1 of 47

SDAPO Communication Co.,Ltd.

3F,Building5,Zone A, No.2, Yanhe Road,Xinsheng District,Longgang Street,Shenzhen,China

Report on the submitted samples said to be:

Sample Description: Poe module
DP9900M,DP9700,DP9900LP,DP9200 , PM1201 , PM3812T
Style/Item No.: V7S,PM3812AT,DP1435LB,PM1202 , DP1205BT,PM3812T V7S Lightning protection,DP1435-12V,DP2662 , PM2401,PM3812R-HL,DP5300 , DP1435-5V,PM3812RCL,PM3812R V2.0 , Raspberry Pi PoE HAT
Country of Origin: China
Brand: SDAPO
Manufacturer: SDAPO Communication Co.,Ltd.
Supplier: SDAPO Communication Co.,Ltd.
Sample Receiving Date: April 22,2022
Testing Period: April 22,2022 - May 10,2022
Result: **Pass**

Signed for and on behalf of

BACL

Queenie Lee

Checked by: _____
Queenie Lee

Lance Lee

Approved by: _____
Lance Lee



TEST REPORT

Report No.: SZ2220421-15709E

Date: May 10, 2022

Page 2 of 47

Summary of Test Result:

TEST REQUEST

CONCLUSION

A RoHS Directive 2011/65/EU and amendment directives (EU) 2015/863 on Lead,Cadmium, Mercury, Hexavalent Chromium, PBBs & PBDEs, Phthalates(DBP, BBP,DEHP, DIBP) content in the components of submitted sample as the requirement of client

A.1 XRF screening test	Pass
A.2 Wet Chemical Testing	
A.2.1 PBBs & PBDEs content	Pass
A.3 Phthalates(DBP, BBP, DEHP, DIBP)content	Pass

TEST REPORT

Report No.: SZ2220421-15709E

Date: May 10, 2022

Page 3 of 47

Result:

Tested part(s):

- (1) Golden plastic with adhesive(tape, transformer, PCB, Poe module) [1]
- (2) Black magnet(shell, transformer, PCB, Poe module) [1]
- (3) Black plastic with black dry glue(coil holder, transformer, PCB, Poe module) [1]
- (4) Coppery enameled wire(coil, transformer, PCB, Poe module) [1]
- (5) Red enameled wire(coil, transformer, PCB, Poe module) [1]
- (6) Black body(SMD resistor, PCB, Poe module) [1]
- (7) Brown body(SMD capacitor, PCB, Poe module) [1]
- (8) Grey body(SMD capacitor, PCB, Poe module) [1]
- (9) Black body(bridge rectifier, PCB, Poe module) [1]
- (10) Black body(small SMD diode, PCB, Poe module) [1]
- (11) Black body(big SMD diode, PCB, Poe module) [1]
- (12) Black body(small SMD triode, PCB, Poe module) [1]
- (13) Black body(big SMD triode, PCB, Poe module) [1]
- (14) Black body(small SMD IC, PCB, Poe module) [1]
- (15) Black body(big SMD IC, PCB, Poe module) [1]
- (16) White printed black coated beige plastic with coppery metal(PCB, Poe module) [1]
- (17) Silvery solder(PCB, Poe module) [1]
- (18) Light gold metal(pin, PCB, Poe module) [1]
- (19) Black plastic(pin holder, PCB, Poe module) [1]
- (20) Golden plastic with adhesive(tape, transformer, PCB, Poe module) [2]
- (21) Black magnet(shell, transformer, PCB, Poe module) [2]
- (22) Black plastic with black dry glue(coil holder, transformer, PCB, Poe module) [2]
- (23) Coppery enameled wire(coil, transformer, PCB, Poe module) [2]
- (24) Red enameled wire(coil, transformer, PCB, Poe module) [2]
- (25) Black body(SMD resistor, PCB, Poe module) [2]
- (26) Brown body(SMD capacitor, PCB, Poe module) [2]
- (27) Grey body(SMD capacitor, PCB, Poe module) [2]
- (28) Black body(small bridge rectifier, PCB, Poe module) [2]
- (29) Black body(big bridge rectifier, PCB, Poe module) [2]
- (30) Black body(small SMD diode, PCB, Poe module) [2]
- (31) Black body(middle SMD diode, PCB, Poe module) [2]

TEST REPORT

Report No.: SZ2220421-15709E

Date: May 10, 2022

Page 4 of 47

- (32) Black plastic(shell, big SMD diode, PCB, Poe module) [2]
- (33) Silvery high temperature solder(big SMD diode, PCB, Poe module) [2]
- (34) Silvery metal(pin, big SMD diode, PCB, Poe module) [2]
- (35) Black body(small SMD triode, PCB, Poe module) [2]
- (36) Black body(big SMD triode, PCB, Poe module) [2]
- (37) Black body(small SMD IC, PCB, Poe module) [2]
- (38) Black body(big SMD IC, PCB, Poe module) [2]
- (39) White printed black coated beige plastic with coppery metal(PCB, Poe module) [2]
- (40) Silvery solder(PCB, Poe module) [2]
- (41) Light golder metal(pin, PCB, Poe module) [2]
- (42) Black plastic(pin holder, PCB, Poe module) [2]
- (43) Golden plastic with adhesive(tape, transformer, PCB, Poe module) [3]
- (44) Black magnet(shell, transformer, PCB, Poe module) [3]
- (45) Black plastic with black dry glue(coil holder, transformer, PCB, Poe module) [3]
- (46) Coppery enameled wire(coil, transformer, PCB, Poe module) [3]
- (47) Red enameled wire(coil, transformer, PCB, Poe module) [3]
- (48) Black body(SMD resistor, PCB, Poe module) [3]
- (49) Brown body(SMD capacitor, PCB, Poe module) [3]
- (50) Grey body(SMD capacitor, PCB, Poe module) [3]
- (51) Black body(bridge rectifier, PCB, Poe module) [3]
- (52) Black body(small SMD diode, PCB, Poe module) [3]
- (53) Black plastic(shell, big SMD diode, PCB, Poe module) [3]
- (54) Silvery high temperature solder(big SMD diode, PCB, Poe module) [3]
- (55) Silvery metal(pin, big SMD diode, PCB, Poe module) [3]
- (56) Black body(small SMD triode, PCB, Poe module) [3]
- (57) Black body(big SMD triode, PCB, Poe module) [3]
- (58) Black body(small SMD IC, PCB, Poe module) [3]
- (59) Black body(big SMD IC, PCB, Poe module) [3]
- (60) White printed black coated beige plastic with coppery metal(PCB, Poe module) [3]
- (61) Silvery solder(PCB, Poe module) [3]
- (62) Light golder metal(pin, PCB, Poe module) [3]
- (63) Black plastic(pin holder, PCB, Poe module) [3]
- (64) Golden plastic with adhesive(tape, transformer, PCB, Poe module) [4]
- (65) Yellow plastic with adhesive(tape, transformer, PCB, Poe module) [4]

TEST REPORT

Report No.: SZ2220421-15709E

Date: May 10, 2022

Page 5 of 47

- (66) Black magnet(shell, transformer, PCB, Poe module) [4]
- (67) Black plastic with black dry glue(coil holder, transformer, PCB, Poe module) [4]
- (68) Coppery enameled wire(coil, transformer, PCB, Poe module) [4]
- (69) Red enameled wire(coil, transformer, PCB, Poe module) [4]
- (70) Black body(SMD resistor, PCB, Poe module) [4]
- (71) Brown body(SMD capacitor, PCB, Poe module) [4]
- (72) Grey body(SMD capacitor, PCB, Poe module) [4]
- (73) Black body(small bridge rectifier, PCB, Poe module) [4]
- (74) Black body(big bridge rectifier, PCB, Poe module) [4]
- (75) Black body(small SMD diode, PCB, Poe module) [4]
- (76) Black body(middle SMD diode, PCB, Poe module) [4]
- (77) Black plastic(shell, big SMD diode, PCB, Poe module) [4]
- (78) Silvery high temperature solder(big SMD diode, PCB, Poe module) [4]
- (79) Silvery metal(pin, big SMD diode, PCB, Poe module) [4]
- (80) Black body(small SMD triode, PCB, Poe module) [4]
- (81) Black body(big SMD triode, PCB, Poe module) [4]
- (82) Black body(small SMD IC, PCB, Poe module) [4]
- (83) Black body(big SMD IC, PCB, Poe module) [4]
- (84) White printed black coated beige plastic with coppery metal(PCB, Poe module) [4]
- (85) Silvery metal(screw, parts) [20]
- (86) Light gold metal(pin, PCB, Poe module) [4]
- (87) Black plastic(pin holder, PCB, Poe module) [4]
- (88) Golden plastic with adhesive(tape, transformer, PCB, Poe module) [5]
- (89) Yellow plastic with adhesive(tape, transformer, PCB, Poe module) [5]
- (90) Black magnet(shell, transformer, PCB, Poe module) [5]
- (91) Black plastic with black dry glue(coil holder, transformer, PCB, Poe module) [5]
- (92) Coppery enameled wire(coil, transformer, PCB, Poe module) [5]
- (93) Red enameled wire(coil, transformer, PCB, Poe module) [5]
- (94) Black body(SMD resistor, PCB, Poe module) [5]
- (95) Brown body(SMD capacitor, PCB, Poe module) [5]
- (96) Grey body(SMD capacitor, PCB, Poe module) [5]
- (97) Black printed silvery body(capacitor, PCB, Poe module) [5]
- (98) Red printed silvery body(capacitor, PCB, Poe module) [5]
- (99) Black plastic(base, capacitor, PCB, Poe module) [5]

TEST REPORT

Report No.: SZ2220421-15709E

Date: May 10, 2022

Page 6 of 47

- (100) Black body(bridge rectifier, PCB, Poe module) [5]
- (101) Black body(small SMD diode, PCB, Poe module) [5]
- (102) Black body(middle SMD diode, PCB, Poe module) [5]
- (103) Black plastic(shell, big SMD diode, PCB, Poe module) [5]
- (104) Silvery high temperature solder(big SMD diode, PCB, Poe module) [5]
- (105) Silvery metal(pin, big SMD diode, PCB, Poe module) [5]
- (106) Black body(SMD triode, PCB, Poe module) [5]
- (107) Black body(IC, PCB, Poe module) [5]
- (108) White printed black coated beige plastic with coppery metal(PCB, Poe module) [5]
- (109) Silvery solder(PCB, Poe module) [5]
- (110) Black body(transformer, PCB, Poe module) [6]
- (111) Golden plastic with adhesive(tape, transformer, PCB, Poe module) [6]
- (112) Yellow plastic with adhesive(tape, transformer, PCB, Poe module) [6]
- (113) Black magnet(shell, transformer, PCB, Poe module) [6]
- (114) Black plastic with black dry glue(coil holder, transformer, PCB, Poe module) [6]
- (115) Coppery enameled wire(coil, transformer, PCB, Poe module) [6]
- (116) Red enameled wire(coil, transformer, PCB, Poe module) [6]
- (117) Black body(SMD resistor, PCB, Poe module) [6]
- (118) Brown body(SMD capacitor, PCB, Poe module) [6]
- (119) Grey body(SMD capacitor, PCB, Poe module) [6]
- (120) White printed black plastic(sleeve, capacitor, PCB, Poe module) [6]
- (121) Silvery body(capacitor, PCB, Poe module) [6]
- (122) Black body(bridge rectifier, PCB, Poe module) [6]
- (123) Black body(small SMD diode, PCB, Poe module) [6]
- (124) Black body(middle SMD diode, PCB, Poe module) [6]
- (125) Black plastic(shell, big SMD diode, PCB, Poe module) [6]
- (126) Silvery high temperature solder(big SMD diode, PCB, Poe module) [6]
- (127) Silvery metal(pin, big SMD diode, PCB, Poe module) [6]
- (128) Black body(small SMD triode, PCB, Poe module) [6]
- (129) Black plastic(shell, big SMD triode, PCB, Poe module) [6]
- (130) Silvery high temperature solder(big SMD triode, PCB, Poe module) [6]
- (131) Silvery metal(pin, big SMD triode, PCB, Poe module) [6]
- (132) Black body(IC, PCB, Poe module) [6]
- (133) Beige plastic(socket, PCB, Poe module) [6]

TEST REPORT

Report No.: SZ2220421-15709E

Date: May 10, 2022

Page 7 of 47

- (134) Light golden metal(pin, socket, PCB, Poe module) [6]
- (135) Light golden metal(socket holder, PCB, Poe module) [6]
- (136) White printed black coated beige plastic with coppery metal(PCB, Poe module) [6]
- (137) Silvery solder(PCB, Poe module) [6]
- (138) Black body(transformer, PCB, Poe module) [7]
- (139) Golden plastic with adhesive(tape, transformer, PCB, Poe module) [7]
- (140) Yellow plastic with adhesive(tape, transformer, PCB, Poe module) [7]
- (141) Black magnet(shell, transformer, PCB, Poe module) [7]
- (142) Black plastic with black dry glue(coil holder, transformer, PCB, Poe module) [7]
- (143) Coppery enameled wire(coil, transformer, PCB, Poe module) [7]
- (144) Red enameled wire(coil, transformer, PCB, Poe module) [7]
- (145) Black body(SMD resistor, PCB, Poe module) [7]
- (146) Brown body(SMD capacitor, PCB, Poe module) [7]
- (147) Grey body(SMD capacitor, PCB, Poe module) [7]
- (148) White printed black plastic(sleeve, capacitor, PCB, Poe module) [7]
- (149) Silvery body(capacitor, PCB, Poe module) [7]
- (150) Black body(bridge rectifier, PCB, Poe module) [7]
- (151) Black body(small SMD diode, PCB, Poe module) [7]
- (152) Black body(middle SMD diode, PCB, Poe module) [7]
- (153) Black plastic(shell, big SMD diode, PCB, Poe module) [7]
- (154) Silvery high temperature solder(big SMD diode, PCB, Poe module) [7]
- (155) Silvery metal(pin, big SMD diode, PCB, Poe module) [7]
- (156) Black body(small SMD triode, PCB, Poe module) [7]
- (157) Black plastic(shell, big SMD triode, PCB, Poe module) [7]
- (158) Silvery high temperature solder(big SMD triode, PCB, Poe module) [7]
- (159) Silvery metal(pin, big SMD triode, PCB, Poe module) [7]
- (160) Black body(IC, PCB, Poe module) [7]
- (161) Beige plastic(socket, PCB, Poe module) [7]
- (162) Light golden metal(pin, socket, PCB, Poe module) [7]
- (163) Light golden metal(socket holder, PCB, Poe module) [7]
- (164) White plastic(socket, PCB, Poe module) [7]
- (165) Silvery metal(pin, socket, PCB, Poe module) [7]
- (166) White printed black coated beige plastic with coppery metal(PCB, Poe module) [7]
- (167) Silvery solder(PCB, Poe module) [7]

TEST REPORT

Report No.: SZ2220421-15709E

Date: May 10, 2022

Page 8 of 47

- (168) Golden plastic with adhesive(tape, transformer, PCB, Poe module) [8]
- (169) Yellow plastic with adhesive(tape, transformer, PCB, Poe module) [8]
- (170) Black magnet(shell, transformer, PCB, Poe module) [8]
- (171) Black plastic with black dry glue(coil holder, transformer, PCB, Poe module) [8]
- (172) Coppery enameled wire(coil, transformer, PCB, Poe module) [8]
- (173) Red enameled wire(coil, transformer, PCB, Poe module) [8]
- (174) Black body(SMD resistor, PCB, Poe module) [8]
- (175) Brown body(SMD capacitor, PCB, Poe module) [8]
- (176) Grey body(SMD capacitor, PCB, Poe module) [8]
- (177) Black printed silvery body(capacitor, PCB, Poe module) [8]
- (178) Red printed silvery body(capacitor, PCB, Poe module) [8]
- (179) Black plastic(base, capacitor, PCB, Poe module) [8]
- (180) Black body(bridge rectifier, PCB, Poe module) [8]
- (181) Black body(small SMD diode, PCB, Poe module) [8]
- (182) Black body(middle SMD diode, PCB, Poe module) [8]
- (183) Black plastic(shell, big SMD diode, PCB, Poe module) [8]
- (184) Silvery high temperature solder(big SMD diode, PCB, Poe module) [8]
- (185) Silvery metal(pin, big SMD diode, PCB, Poe module) [8]
- (186) Black body(SMD triode, PCB, Poe module) [8]
- (187) Black body(IC, PCB, Poe module) [8]
- (188) Light golden metal(pin, PCB, Poe module) [8]
- (189) Black plastic(pin holder, PCB, Poe module) [8]
- (190) White printed black coated beige plastic with coppery metal(PCB, Poe module) [8]
- (191) Silvery solder(PCB, Poe module) [8]
- (192) Golden plastic with adhesive(tape, transformer, PCB, Poe module) [9]
- (193) Yellow plastic with adhesive(tape, transformer, PCB, Poe module) [9]
- (194) Black magnet(shell, transformer, PCB, Poe module) [9]
- (195) Black plastic with black dry glue(coil holder, transformer, PCB, Poe module) [9]
- (196) Coppery enameled wire(coil, transformer, PCB, Poe module) [9]
- (197) Red enameled wire(coil, transformer, PCB, Poe module) [9]
- (198) Black body(inductor, PCB, Poe module) [9]
- (199) Black body(SMD resistor, PCB, Poe module) [9]
- (200) Brown body(SMD capacitor, PCB, Poe module) [9]
- (201) Grey body(SMD capacitor, PCB, Poe module) [9]

TEST REPORT

Report No.: SZ2220421-15709E

Date: May 10, 2022

Page 9 of 47

- (202) White printed black plastic(sleeve, capacitor, PCB, Poe module) [9]
- (203) Silvery body(capacitor, PCB, Poe module) [9]
- (204) Black body(bridge rectifier, PCB, Poe module) [9]
- (205) Black body(small SMD diode, PCB, Poe module) [9]
- (206) Black body(middle SMD diode, PCB, Poe module) [9]
- (207) Black plastic(shell, big SMD diode, PCB, Poe module) [9]
- (208) Silvery high temperature solder(big SMD diode, PCB, Poe module) [9]
- (209) Silvery metal(pin, big SMD diode, PCB, Poe module) [9]
- (210) Black body(small SMD triode, PCB, Poe module) [9]
- (211) Black plastic(shell, big SMD triode, PCB, Poe module) [9]
- (212) Silvery high temperature solder(big SMD triode, PCB, Poe module) [9]
- (213) Silvery metal(pin, big SMD triode, PCB, Poe module) [9]
- (214) Black body(IC, PCB, Poe module) [9]
- (215) Light golden metal(pin, PCB, Poe module) [9]
- (216) Black plastic(pin holder, PCB, Poe module) [9]
- (217) White printed black coated beige plastic with coppery metal(PCB, Poe module) [9]
- (218) Silvery solder(PCB, Poe module) [9]
- (219) Black printed silvery metal(cover, transformer, PCB, Poe module) [10]
- (220) Yellow plastic with adhesive(tape, transformer, PCB, Poe module) [10]
- (221) Black magnet(shell, transformer, PCB, Poe module) [10]
- (222) Black plastic with black dry glue(coil holder, transformer, PCB, Poe module) [10]
- (223) Coppery enameled wire(coil, transformer, PCB, Poe module) [10]
- (224) Red enameled wire(coil, transformer, PCB, Poe module) [10]
- (225) Black printed silvery metal(cover, transformer, PCB, Poe module) [10]
- (226) Black body(inductor, PCB, Poe module) [10]
- (227) Black body(SMD resistor, PCB, Poe module) [10]
- (228) Brown body(SMD capacitor, PCB, Poe module) [10]
- (229) Grey body(SMD capacitor, PCB, Poe module) [10]
- (230) Black printed silvery body(capacitor, PCB, Poe module) [10]
- (231) Black plastic(base, capacitor, PCB, Poe module) [10]
- (232) Black body(bridge rectifier, PCB, Poe module) [10]
- (233) Black body(small SMD diode, PCB, Poe module) [10]
- (234) Black body(middle SMD diode, PCB, Poe module) [10]
- (235) Black plastic(shell, big SMD diode, PCB, Poe module) [10]

TEST REPORT

Report No.: SZ2220421-15709E

Date: May 10, 2022

Page 10 of 47

- (236) Silvery high temperature solder(big SMD diode, PCB, Poe module) [10]
- (237) Silvery metal(pin, big SMD diode, PCB, Poe module) [10]
- (238) Black body(small SMD triode, PCB, Poe module) [10]
- (239) Black plastic(shell, big SMD triode, PCB, Poe module) [10]
- (240) Silvery solder(PCB, Poe module) [20]
- (241) Silvery metal(pin, big SMD triode, PCB, Poe module) [10]
- (242) Black body(IC, PCB, Poe module) [10]
- (243) Golden metal(pin, PCB, Poe module) [10]
- (244) Black plastic(pin holder, PCB, Poe module) [10]
- (245) White printed green coated beige plastic with coppery metal(PCB, Poe module) [10]
- (246) Silvery solder(PCB, Poe module) [10]
- (247) Golden plastic with adhesive(tape, transformer, PCB, Poe module) [11]
- (248) Yellow plastic with adhesive(tape, transformer, PCB, Poe module) [11]
- (249) Black magnet(shell, transformer, PCB, Poe module) [11]
- (250) Black plastic with black dry glue(coil holder, transformer, PCB, Poe module) [11]
- (251) Coppery enameled wire(coil, transformer, PCB, Poe module) [11]
- (252) Red enameled wire(coil, transformer, PCB, Poe module) [11]
- (253) Black body(SMD resistor, PCB, Poe module) [11]
- (254) Brown body(SMD capacitor, PCB, Poe module) [11]
- (255) Grey body(SMD capacitor, PCB, Poe module) [11]
- (256) White printed black plastic(sleeve, capacitor, PCB, Poe module) [11]
- (257) Silvery body(capacitor, PCB, Poe module) [11]
- (258) Silvery metal(pin, capacitor, PCB, Poe module) [11]
- (259) Black body(bridge rectifier, PCB, Poe module) [11]
- (260) Black body(small SMD diode, PCB, Poe module) [11]
- (261) Black body(middle SMD diode, PCB, Poe module) [11]
- (262) Black plastic(shell, big SMD diode, PCB, Poe module) [11]
- (263) Silvery high temperature solder(big SMD diode, PCB, Poe module) [11]
- (264) Silvery metal(pin, big SMD diode, PCB, Poe module) [11]
- (265) Black body(small SMD triode, PCB, Poe module) [11]
- (266) Black plastic(shell, big SMD triode, PCB, Poe module) [11]
- (267) White printed Black coated beige plastic with coppery metal(PCB, Poe module) [20]
- (268) Silvery metal(pin, big SMD triode, PCB, Poe module) [11]
- (269) Black body(IC, PCB, Poe module) [11]

TEST REPORT

Report No.: SZ2220421-15709E

Date: May 10, 2022

Page 11 of 47

- (270) Beige plastic(socket, PCB, Poe module) [11]
- (271) Light golden metal(pin, PCB, Poe module) [11]
- (272) White printed black coated beige plastic with coppery metal(PCB, Poe module) [11]
- (273) Silvery solder(PCB, Poe module) [11]
- (274) Black printed silvery metal(cover, transformer, PCB, Poe module) [12]
- (275) White plastic with adhesive(tape, transformer, PCB, Poe module) [12]
- (276) Black magnet(shell, transformer, PCB, Poe module) [12]
- (277) Black plastic with black dry glue(coil holder, transformer, PCB, Poe module) [12]
- (278) Coppery enameled wire(coil, transformer, PCB, Poe module) [12]
- (279) Red enameled wire(coil, transformer, PCB, Poe module) [12]
- (280) Black body(SMD resistor, PCB, Poe module) [12]
- (281) Brown body(SMD capacitor, PCB, Poe module) [12]
- (282) Grey body(SMD capacitor, PCB, Poe module) [12]
- (283) Black printed silvery body(capacitor, PCB, Poe module) [12]
- (284) Orange printed silvery body(capacitor, PCB, Poe module) [12]
- (285) Black plastic(base, capacitor, PCB, Poe module) [12]
- (286) Black body(bridge rectifier, PCB, Poe module) [12]
- (287) Black body(small SMD diode, PCB, Poe module) [12]
- (288) Black body(middle SMD diode, PCB, Poe module) [12]
- (289) Black plastic(shell, big SMD diode, PCB, Poe module) [12]
- (290) Silvery high temperature solder(big SMD diode, PCB, Poe module) [12]
- (291) Silvery metal(pin, big SMD diode, PCB, Poe module) [12]
- (292) Black body(SMD triode, PCB, Poe module) [12]
- (293) Black body(IC, PCB, Poe module) [12]
- (294) Light golden metal(pin, PCB, Poe module) [12]
- (295) Black plastic(pin holder, PCB, Poe module) [12]
- (296) White printed black coated beige plastic with coppery metal(PCB, Poe module) [12]
- (297) Silvery solder(PCB, Poe module) [12]
- (298) Golden plastic with adhesive(tape, transformer, PCB, Poe module) [13]
- (299) Yellow plastic with adhesive(tape, transformer, PCB, Poe module) [13]
- (300) Black magnet(shell, transformer, PCB, Poe module) [13]
- (301) Black plastic with black dry glue(coil holder, transformer, PCB, Poe module) [13]
- (302) Coppery enameled wire(coil, transformer, PCB, Poe module) [13]
- (303) Red enameled wire(coil, transformer, PCB, Poe module) [13]

TEST REPORT

Report No.: SZ2220421-15709E

Date: May 10, 2022

Page 12 of 47

- (304) Black printed silvery metal(cover, transformer, PCB, Poe module) [13]
- (305) Black body(SMD resistor, PCB, Poe module) [13]
- (306) Brown body(SMD capacitor, PCB, Poe module) [13]
- (307) Grey body(SMD capacitor, PCB, Poe module) [13]
- (308) Red printed silvery body(capacitor, PCB, Poe module) [13]
- (309) Black body(bridge rectifier, PCB, Poe module) [13]
- (310) Black body(small SMD diode, PCB, Poe module) [13]
- (311) Black body(middle SMD diode, PCB, Poe module) [13]
- (312) Black plastic(shell, big SMD diode, PCB, Poe module) [13]
- (313) Silvery high temperature solder(big SMD diode, PCB, Poe module) [13]
- (314) Silvery metal(pin, big SMD diode, PCB, Poe module) [13]
- (315) Black body(small SMD triode, PCB, Poe module) [13]
- (316) Black body(small IC, PCB, Poe module) [13]
- (317) Black body(middle IC, PCB, Poe module) [13]
- (318) Black body(big IC, PCB, Poe module) [13]
- (319) Golden metal(pin, PCB, Poe module) [13]
- (320) Black plastic(pin holder, PCB, Poe module) [13]
- (321) White printed green coated beige plastic with coppery metal(PCB, Poe module) [13]
- (322) Silvery solder(PCB, Poe module) [13]
- (323) Beige plastic(socket, PCB, Poe module) [14]
- (324) Light golden metal(pin, socket, PCB, Poe module) [14]
- (325) Light golden metal(socket holder, socket, PCB, Poe module) [14]
- (326) Black body(SMD resistor, PCB, Poe module) [14]
- (327) Black body(SMD diode, PCB, Poe module) [14]
- (328) Black body(IC, PCB, Poe module) [14]
- (329) Black printed silvery metal(capacitor, PCB, Poe module) [14]
- (330) Black plastic(base, capacitor, PCB, Poe module) [14]
- (331) Black magnet(coil holder, inductor, PCB, Poe module) [14]
- (332) Coppery enameled wire(coil, inductor, PCB, Poe module) [14]
- (333) White printed black coated beige plastic with coppery metal(PCB, Poe module) [14]
- (334) Clear laminated black/red coated silvery plastic with adhesive(label, fan, PCB, Poe module) [20]
- (335) Black body(small transformer, PCB, Poe module) [15]
- (336) Golden plastic with adhesive(tape, transformer, PCB, Poe module) [15]
- (337) Yellow plastic with adhesive(tape, transformer, PCB, Poe module) [15]

TEST REPORT

Report No.: SZ2220421-15709E

Date: May 10, 2022

Page 13 of 47

- (338) Black magnet(shell, transformer, PCB, Poe module) [15]
- (339) Black plastic with black dry glue(coil holder, transformer, PCB, Poe module) [15]
- (340) Coppery enameled wire(coil, transformer, PCB, Poe module) [15]
- (341) Red enameled wire(coil, transformer, PCB, Poe module) [15]
- (342) Black body(SMD resistor, PCB, Poe module) [15]
- (343) Brown body(SMD capacitor, PCB, Poe module) [15]
- (344) Grey body(SMD capacitor, PCB, Poe module) [15]
- (345) Black printed silvery body(capacitor, PCB, Poe module) [15]
- (346) Black plastic(base, capacitor, PCB, Poe module) [15]
- (347) Black body(bridge rectifier, PCB, Poe module) [15]
- (348) Black body(small SMD diode, PCB, Poe module) [15]
- (349) Black body(middle SMD diode, PCB, Poe module) [15]
- (350) Black plastic(shell, big SMD diode, PCB, Poe module) [15]
- (351) Silvery high temperature solder(big SMD diode, PCB, Poe module) [15]
- (352) Silvery metal(pin, big SMD diode, PCB, Poe module) [15]
- (353) Black body(SMD triode, PCB, Poe module) [15]
- (354) Black body(IC, PCB, Poe module) [15]
- (355) Beige plastic(socket, PCB, Poe module) [15]
- (356) Light golden metal(pin, socket, PCB, Poe module) [15]
- (357) White plastic(socket, PCB, Poe module) [15]
- (358) Silvery metal(pin, socket, PCB, Poe module) [15]
- (359) White printed green coated beige plastic with coppery metal(PCB, Poe module) [15]
- (360) Silvery metal(nut, fan, PCB, Poe module) [20]
- (361) Golden plastic with adhesive(tape, transformer, PCB, Poe module) [16]
- (362) Yellow plastic with adhesive(tape, transformer, PCB, Poe module) [16]
- (363) Black magnet(shell, transformer, PCB, Poe module) [16]
- (364) Black plastic with black dry glue(coil holder, transformer, PCB, Poe module) [16]
- (365) Coppery enameled wire(coil, transformer, PCB, Poe module) [16]
- (366) Red enameled wire(coil, transformer, PCB, Poe module) [16]
- (367) Black body(SMD resistor, PCB, Poe module) [16]
- (368) Brown body(SMD capacitor, PCB, Poe module) [16]
- (369) Grey body(SMD capacitor, PCB, Poe module) [16]
- (370) Black body(inductor, PCB, Poe module) [16]
- (371) Black body(bridge rectifier, PCB, Poe module) [16]

TEST REPORT

Report No.: SZ2220421-15709E

Date: May 10, 2022

Page 14 of 47

- (372) Black body(small SMD diode, PCB, Poe module) [16]
- (373) Black body(middle SMD diode, PCB, Poe module) [16]
- (374) Black plastic(shell, big SMD diode, PCB, Poe module) [16]
- (375) Silvery high temperature solder(big SMD diode, PCB, Poe module) [16]
- (376) Silvery metal(pin, big SMD diode, PCB, Poe module) [16]
- (377) Black body(big SMD diode, PCB, Poe module) [16]
- (378) Black body(small SMD triode, PCB, Poe module) [16]
- (379) Black plastic(shell, big SMD triode, PCB, Poe module) [16]
- (380) Silvery high temperature solder(big SMD triode, PCB, Poe module) [16]
- (381) Silvery metal(pin, big SMD triode, PCB, Poe module) [16]
- (382) Black body(IC, PCB, Poe module) [16]
- (383) Light golden metal(pin, PCB, Poe module) [16]
- (384) Black plastic(pin holder, PCB, Poe module) [16]
- (385) White printed green coated beige plastic with coppery metal(PCB, Poe module) [16]
- (386) Silvery solder(PCB, Poe module) [16]
- (387) Golden plastic with adhesive(tape, transformer, PCB, Poe module) [17]
- (388) Yellow plastic with adhesive(tape, transformer, PCB, Poe module) [17]
- (389) Black magnet(shell, transformer, PCB, Poe module) [17]
- (390) Black plastic with black dry glue(coil holder, transformer, PCB, Poe module) [17]
- (391) Coppery enameled wire(coil, transformer, PCB, Poe module) [17]
- (392) Red enameled wire(coil, transformer, PCB, Poe module) [17]
- (393) Black body(SMD resistor, PCB, Poe module) [17]
- (394) Brown body(SMD capacitor, PCB, Poe module) [17]
- (395) Grey body(SMD capacitor, PCB, Poe module) [17]
- (396) Black body(bridge rectifier, PCB, Poe module) [17]
- (397) Black body(small SMD diode, PCB, Poe module) [17]
- (398) Black body(middle SMD diode, PCB, Poe module) [17]
- (399) Black plastic(shell, big SMD diode, PCB, Poe module) [17]
- (400) Silvery high temperature solder(big SMD diode, PCB, Poe module) [17]
- (401) Silvery metal(pin, big SMD diode, PCB, Poe module) [17]
- (402) Black body(small SMD triode, PCB, Poe module) [17]
- (403) Black body(IC, PCB, Poe module) [17]
- (404) Light golden metal(pin, PCB, Poe module) [17]
- (405) Black plastic(pin holder, PCB, Poe module) [17]

TEST REPORT

Report No.: SZ2220421-15709E

Date: May 10, 2022

Page 15 of 47

- (406) White printed green coated beige plastic with coppery metal(PCB, Poe module) [17]
- (407) Silvery solder(PCB, Poe module) [17]
- (408) Black body(small transformer, PCB, Poe module) [18]
- (409) Black dry glue(holder, transformer, PCB, Poe module) [18]
- (410) Yellow plastic with adhesive(tape, transformer, PCB, Poe module) [18]
- (411) Black magnet(shell, transformer, PCB, Poe module) [18]
- (412) Black plastic with black(coil holder, transformer, PCB, Poe module) [18]
- (413) Coppery enameled wire(coil, transformer, PCB, Poe module) [18]
- (414) Red enameled wire(coil, transformer, PCB, Poe module) [18]
- (415) Black body(SMD resistor, PCB, Poe module) [18]
- (416) Brown body(SMD capacitor, PCB, Poe module) [18]
- (417) Grey body(SMD capacitor, PCB, Poe module) [18]
- (418) Silvery body(capacitor, PCB, Poe module) [18]
- (419) White printed black plastic(sleeve, capacitor, PCB, Poe module) [18]
- (420) Black body(bridge rectifier, PCB, Poe module) [18]
- (421) Black body(small SMD diode, PCB, Poe module) [18]
- (422) Black body(middle SMD diode, PCB, Poe module) [18]
- (423) Black plastic(shell, big SMD diode, PCB, Poe module) [18]
- (424) Silvery high temperature solder(big SMD diode, PCB, Poe module) [18]
- (425) Silvery metal(pin, big SMD diode, PCB, Poe module) [18]
- (426) Black body(SMD triode, PCB, Poe module) [18]
- (427) Black body(IC, PCB, Poe module) [18]
- (428) Beige plastic(socket, PCB, Poe module) [18]
- (429) Light golden metal(pin, socket, PCB, Poe module) [18]
- (430) White printed green coated beige plastic with coppery metal(PCB, Poe module) [18]
- (431) Silvery metal(screw, fan, PCB, Poe module) [20]
- (432) Black body(transformer, PCB, Poe module) [19]
- (433) Golden plastic with adhesive(tape, transformer, PCB, Poe module) [19]
- (434) Yellow plastic with adhesive(tape, transformer, PCB, Poe module) [19]
- (435) Black magnet(shell, transformer, PCB, Poe module) [19]
- (436) Black plastic with black dry glue(coil holder, transformer, PCB, Poe module) [19]
- (437) Coppery enameled wire(coil, transformer, PCB, Poe module) [19]
- (438) Red enameled wire(coil, transformer, PCB, Poe module) [19]
- (439) Black body(SMD resistor, PCB, Poe module) [19]

TEST REPORT

Report No.: SZ2220421-15709E

Date: May 10, 2022

Page 16 of 47

- (440) Brown body(SMD capacitor, PCB, Poe module) [19]
- (441) Grey body(SMD capacitor, PCB, Poe module) [19]
- (442) Black printed silvery body(capacitor, PCB, Poe module) [19]
- (443) Black plastic(base, capacitor, PCB, Poe module) [19]
- (444) Blue body(capacitor, PCB, Poe module) [19]
- (445) Black body(bridge rectifier, PCB, Poe module) [19]
- (446) Black body(small SMD diode, PCB, Poe module) [19]
- (447) Black body(middle SMD diode, PCB, Poe module) [19]
- (448) Black plastic(shell, big SMD diode, PCB, Poe module) [19]
- (449) Silvery high temperature solder(big SMD diode, PCB, Poe module) [19]
- (450) Silvery metal(pin, big SMD diode, PCB, Poe module) [19]
- (451) Black body(SMD triode, PCB, Poe module) [19]
- (452) Black body(IC, PCB, Poe module) [19]
- (453) Beige plastic(socket, PCB, Poe module) [19]
- (454) Light golden metal(pin, socket, PCB, Poe module) [19]
- (455) Light golden metal(socket holder, PCB, Poe module) [19]
- (456) White printed Black coated beige plastic with coppery metal(PCB, Poe module) [19]
- (457) Silvery solder(PCB, Poe module) [19]
- (458) Golden plastic with adhesive(tape, transformer, PCB, Poe module) [20]
- (459) Black magnet(shell, transformer, PCB, Poe module) [20]
- (460) Black plastic with black dry glue(coil holder, transformer, PCB, Poe module) [20]
- (461) Coppery enameled wire(coil, transformer, PCB, Poe module) [20]
- (462) Red enameled wire(coil, transformer, PCB, Poe module) [20]
- (463) Black body(SMD resistor, PCB, Poe module) [20]
- (464) Brown body(SMD capacitor, PCB, Poe module) [20]
- (465) Grey body(SMD capacitor, PCB, Poe module) [20]
- (466) Black body(bridge rectifier, PCB, Poe module) [20]
- (467) Black body(small SMD diode, PCB, Poe module) [20]
- (468) Black body(middle SMD diode, PCB, Poe module) [20]
- (469) Black plastic(shell, big SMD diode, PCB, Poe module) [20]
- (470) Silvery high temperature solder(big SMD diode, PCB, Poe module) [20]
- (471) Silvery metal(pin, big SMD diode, PCB, Poe module) [20]
- (472) Black body(SMD triode, PCB, Poe module) [20]
- (473) Black body(IC, PCB, Poe module) [20]

TEST REPORT

Report No.: SZ2220421-15709E

Date: May 10, 2022

Page 17 of 47

- (474) Black plastic(socket, PCB, Poe module) [20]
- (475) Silvery metal(contact plate, socket, PCB, Poe module) [20]
- (476) Beige plastic(socket, PCB, Poe module) [20]
- (477) Silvery metal(pin, socket, PCB, Poe module) [20]
- (478) White plastic(plug, PCB, Poe module) [20]
- (479) Silvery metal(pin, plug, PCB, Poe module) [20]
- (480) Black PVC(wire jacket, fan, PCB, Poe module) [20]
- (481) Red PVC(wire jacket, fan, PCB, Poe module) [20]
- (482) Silvery metal(wire, fan, PCB, Poe module) [20]
- (483) Black plastic(shell, fan, PCB, Poe module) [20]
- (484) Black body(IC, small PCB, fan, PCB, Poe module) [20]
- (485) White printed green coated beige plastic with coppery metal(small PCB, fan, PCB, Poe module) [20]
- (486) Silvery solder(small PCB, fan, PCB, Poe module) [20]
- (487) Black soft plastic(gasket ring, axis, motor, fan, PCB, Poe module) [20]
- (488) Silvery metal(axis, motor, fan, PCB, Poe module) [20]
- (489) Silvery metal(rotor, motor, fan, PCB, Poe module) [20]
- (490) Black plastic(coil holder, motor, fan, PCB, Poe module) [20]
- (491) Red enameled wire(coil, motor, fan, PCB, Poe module) [20]
- (492) Coppery metal(bearing, motor, fan, PCB, Poe module) [20]
- (493) Black rubber magnet(motor, fan, PCB, Poe module) [20]
- (494) Silvery metal(shell, motor, fan, PCB, Poe module) [20]
- (495) Black plastic(fan leaf, fan, PCB, Poe module) [20]

Note:

[1]DP9900M; [2]DP9700; [3]DP9900LP; [4]DP9200; [5]PM1201; [6]PM3812T V7S; [7]PM3812AT; [8]DP1435LB; [9] PM1202; [10]DP1205BT; [11]PM3812T V7S Lighting protection; [12]DP1435-12V; [13]DP2662; [14]PM2401; [15] PM3812R-HL; [16]DP5300; [17]DP1435-5V; [18]PM3812RCL; [19]PM3812R V2.0; [20]Raspberry Pi PoE HAT;

TEST REPORT

Report No.: SZ2220421-15709E

Date: May 10, 2022

Page 18 of 47

A RoHS Directive 2011/65/EU and amendment directives (EU) 2015/863 on Lead, Cadmium, Mercury, Hexavalent Chromium, PBBs & PBDEs, Phthalates (DBP, BBP, DEHP, DIBP) content in the components of submitted sample as the requirement of client

A.1 XRF screening test

Test method: IEC 62321-3-1:2013

Seq No.	Result				
	Pb	Cd	Hg	Cr	Br
(1)	BL	BL	BL	BL	BL
(2)	BL	BL	BL	BL	BL
(3)	BL	BL	BL	BL	BL
(4)	BL	BL	BL	BL	BL
(5)	BL	BL	BL	BL	BL
(6)	BL	BL	BL	BL	BL
(7)	BL	BL	BL	BL	BL
(8)	BL	BL	BL	BL	BL
(9)	BL	BL	BL	BL	BL
(10)	BL	BL	BL	BL	BL
(11)	BL	BL	BL	BL	BL
(12)	BL	BL	BL	BL	BL
(13)	BL	BL	BL	BL	BL
(14)	BL	BL	BL	BL	BL
(15)	BL	BL	BL	BL	BL
(16)*	BL	BL	BL	BL	X
(17)	BL	BL	BL	BL	---
(18)	BL	BL	BL	BL	---
(19)	BL	BL	BL	BL	BL
(20)	BL	BL	BL	BL	BL
(21)	BL	BL	BL	BL	BL
(22)	BL	BL	BL	BL	BL
(23)	BL	BL	BL	BL	BL
(24)	BL	BL	BL	BL	BL
(25)	BL	BL	BL	BL	BL
(26)	BL	BL	BL	BL	BL
(27)	BL	BL	BL	BL	BL

TEST REPORT

Report No.: SZ2220421-15709E

Date: May 10, 2022

Page 19 of 47

Seq No.	Result				
	Pb	Cd	Hg	Cr	Br
(28)	BL	BL	BL	BL	BL
(29)	BL	BL	BL	BL	BL
(30)	BL	BL	BL	BL	BL
(31)	BL	BL	BL	BL	BL
(32)	BL	BL	BL	BL	BL
(33)* ¹	OL(873408)	BL	BL	BL	---
(34)	BL	BL	BL	BL	---
(35)	BL	BL	BL	BL	BL
(36)	BL	BL	BL	BL	BL
(37)	BL	BL	BL	BL	BL
(38)	BL	BL	BL	BL	BL
(39)*	BL	BL	BL	BL	X
(40)	BL	BL	BL	BL	---
(41)	BL	BL	BL	BL	---
(42)	BL	BL	BL	BL	BL
(43)	BL	BL	BL	BL	BL
(44)	BL	BL	BL	BL	BL
(45)	BL	BL	BL	BL	BL
(46)	BL	BL	BL	BL	BL
(47)	BL	BL	BL	BL	BL
(48)	BL	BL	BL	BL	BL
(49)	BL	BL	BL	BL	BL
(50)	BL	BL	BL	BL	BL
(51)	BL	BL	BL	BL	BL
(52)	BL	BL	BL	BL	BL
(53)	BL	BL	BL	BL	BL
(54)* ¹	OL(912889)	BL	BL	BL	---
(55)	BL	BL	BL	BL	---
(56)	BL	BL	BL	BL	BL
(57)	BL	BL	BL	BL	BL
(58)	BL	BL	BL	BL	BL

TEST REPORT

Report No.: SZ2220421-15709E

Date: May 10, 2022

Page 20 of 47

Seq No.	Result				
	Pb	Cd	Hg	Cr	Br
(59)	BL	BL	BL	BL	BL
(60)*	BL	BL	BL	BL	X
(61)	BL	BL	BL	BL	---
(62)	BL	BL	BL	BL	---
(63)	BL	BL	BL	BL	BL
(64)	BL	BL	BL	BL	BL
(65)	BL	BL	BL	BL	BL
(66)	BL	BL	BL	BL	BL
(67)	BL	BL	BL	BL	BL
(68)	BL	BL	BL	BL	BL
(69)	BL	BL	BL	BL	BL
(70)	BL	BL	BL	BL	BL
(71)	BL	BL	BL	BL	BL
(72)	BL	BL	BL	BL	BL
(73)	BL	BL	BL	BL	BL
(74)	BL	BL	BL	BL	BL
(75)	BL	BL	BL	BL	BL
(76)	BL	BL	BL	BL	BL
(77)	BL	BL	BL	BL	BL
(78)* ¹	OL(873145)	BL	BL	BL	---
(79)	BL	BL	BL	BL	---
(80)	BL	BL	BL	BL	BL
(81)	BL	BL	BL	BL	BL
(82)	BL	BL	BL	BL	BL
(83)	BL	BL	BL	BL	BL
(84)	BL	BL	BL	BL	BL
(85)	BL	BL	BL	BL	---
(86)	BL	BL	BL	BL	---
(87)	BL	BL	BL	BL	BL
(88)	BL	BL	BL	BL	BL
(89)	BL	BL	BL	BL	BL

TEST REPORT

Report No.: SZ2220421-15709E

Date: May 10, 2022

Page 21 of 47

Seq No.	Result				
	Pb	Cd	Hg	Cr	Br
(90)	BL	BL	BL	BL	BL
(91)	BL	BL	BL	BL	BL
(92)	BL	BL	BL	BL	BL
(93)	BL	BL	BL	BL	BL
(94)	BL	BL	BL	BL	BL
(95)	BL	BL	BL	BL	BL
(96)	BL	BL	BL	BL	BL
(97)	BL	BL	BL	BL	BL
(98)	BL	BL	BL	BL	BL
(99)	BL	BL	BL	BL	BL
(100)	BL	BL	BL	BL	BL
(101)	BL	BL	BL	BL	BL
(102)	BL	BL	BL	BL	BL
(103)	BL	BL	BL	BL	BL
(104)* ¹	OL(882994)	BL	BL	BL	---
(105)	BL	BL	BL	BL	---
(106)	BL	BL	BL	BL	BL
(107)	BL	BL	BL	BL	BL
(108)*	BL	BL	BL	BL	X
(109)	BL	BL	BL	BL	---
(110)	BL	BL	BL	BL	BL
(111)	BL	BL	BL	BL	BL
(112)	BL	BL	BL	BL	BL
(113)	BL	BL	BL	BL	BL
(114)	BL	BL	BL	BL	BL
(115)	BL	BL	BL	BL	BL
(116)	BL	BL	BL	BL	BL
(117)	BL	BL	BL	BL	BL
(118)	BL	BL	BL	BL	BL
(119)	BL	BL	BL	BL	BL
(120)	BL	BL	BL	BL	BL

TEST REPORT

Report No.: SZ2220421-15709E

Date: May 10, 2022

Page 22 of 47

Seq No.	Result				
	Pb	Cd	Hg	Cr	Br
(121)	BL	BL	BL	BL	BL
(122)	BL	BL	BL	BL	BL
(123)	BL	BL	BL	BL	BL
(124)	BL	BL	BL	BL	BL
(125)	BL	BL	BL	BL	BL
(126)* ¹	OL(852438)	BL	BL	BL	---
(127)	BL	BL	BL	BL	---
(128)	BL	BL	BL	BL	BL
(129)	BL	BL	BL	BL	BL
(130)* ¹	OL(896298)	BL	BL	BL	---
(131)	BL	BL	BL	BL	---
(132)	BL	BL	BL	BL	BL
(133)	BL	BL	BL	BL	BL
(134)	BL	BL	BL	BL	---
(135)	BL	BL	BL	BL	---
(136)*	BL	BL	BL	BL	X
(137)	BL	BL	BL	BL	---
(138)	BL	BL	BL	BL	BL
(139)	BL	BL	BL	BL	BL
(140)	BL	BL	BL	BL	BL
(141)	BL	BL	BL	BL	BL
(142)	BL	BL	BL	BL	BL
(143)	BL	BL	BL	BL	BL
(144)	BL	BL	BL	BL	BL
(145)	BL	BL	BL	BL	BL
(146)	BL	BL	BL	BL	BL
(147)	BL	BL	BL	BL	BL
(148)	BL	BL	BL	BL	BL
(149)	BL	BL	BL	BL	BL
(150)	BL	BL	BL	BL	BL
(151)	BL	BL	BL	BL	BL

TEST REPORT

Report No.: SZ2220421-15709E

Date: May 10, 2022

Page 23 of 47

Seq No.	Result				
	Pb	Cd	Hg	Cr	Br
(152)	BL	BL	BL	BL	BL
(153)	BL	BL	BL	BL	BL
(154)* ¹	OL(853354)	BL	BL	BL	---
(155)	BL	BL	BL	BL	---
(156)	BL	BL	BL	BL	BL
(157)	BL	BL	BL	BL	BL
(158)* ¹	OL(852488)	BL	BL	BL	---
(159)	BL	BL	BL	BL	---
(160)	BL	BL	BL	BL	BL
(161)	BL	BL	BL	BL	BL
(162)	BL	BL	BL	BL	---
(163)	BL	BL	BL	BL	---
(164)	BL	BL	BL	BL	BL
(165)	BL	BL	BL	BL	---
(166)*	BL	BL	BL	BL	X
(167)	BL	BL	BL	BL	---
(168)	BL	BL	BL	BL	BL
(169)	BL	BL	BL	BL	BL
(170)	BL	BL	BL	BL	BL
(171)	BL	BL	BL	BL	BL
(172)	BL	BL	BL	BL	BL
(173)	BL	BL	BL	BL	BL
(174)	BL	BL	BL	BL	BL
(175)	BL	BL	BL	BL	BL
(176)	BL	BL	BL	BL	BL
(177)	BL	BL	BL	BL	BL
(178)	BL	BL	BL	BL	BL
(179)	BL	BL	BL	BL	BL
(180)	BL	BL	BL	BL	BL
(181)	BL	BL	BL	BL	BL
(182)	BL	BL	BL	BL	BL

TEST REPORT

Report No.: SZ2220421-15709E

Date: May 10, 2022

Page 24 of 47

Seq No.	Result				
	Pb	Cd	Hg	Cr	Br
(183)	BL	BL	BL	BL	BL
(184)* ¹	OL(911218)	BL	BL	BL	---
(185)	BL	BL	BL	BL	---
(186)	BL	BL	BL	BL	BL
(187)	BL	BL	BL	BL	BL
(188)	BL	BL	BL	BL	---
(189)	BL	BL	BL	BL	BL
(190)*	BL	BL	BL	BL	X
(191)	BL	BL	BL	BL	---
(192)	BL	BL	BL	BL	BL
(193)	BL	BL	BL	BL	BL
(194)	BL	BL	BL	BL	BL
(195)	BL	BL	BL	BL	BL
(196)	BL	BL	BL	BL	BL
(197)	BL	BL	BL	BL	BL
(198)	BL	BL	BL	BL	BL
(199)	BL	BL	BL	BL	BL
(200)	BL	BL	BL	BL	BL
(201)	BL	BL	BL	BL	BL
(202)	BL	BL	BL	BL	BL
(203)	BL	BL	BL	BL	BL
(204)	BL	BL	BL	BL	BL
(205)	BL	BL	BL	BL	BL
(206)	BL	BL	BL	BL	BL
(207)	BL	BL	BL	BL	BL
(208)* ¹	OL(867559)	BL	BL	BL	---
(209)	BL	BL	BL	BL	---
(210)	BL	BL	BL	BL	BL
(211)	BL	BL	BL	BL	BL
(212)* ¹	OL(859638)	BL	BL	BL	---
(213)	BL	BL	BL	BL	---

TEST REPORT

Report No.: SZ2220421-15709E

Date: May 10, 2022

Page 25 of 47

Seq No.	Result				
	Pb	Cd	Hg	Cr	Br
(214)	BL	BL	BL	BL	BL
(215)	BL	BL	BL	BL	---
(216)	BL	BL	BL	BL	BL
(217)*	BL	BL	BL	BL	X
(218)	BL	BL	BL	BL	---
(219)	BL	BL	BL	BL	---
(220)	BL	BL	BL	BL	BL
(221)	BL	BL	BL	BL	BL
(222)	BL	BL	BL	BL	BL
(223)	BL	BL	BL	BL	BL
(224)	BL	BL	BL	BL	BL
(225)	BL	BL	BL	BL	---
(226)	BL	BL	BL	BL	BL
(227)	BL	BL	BL	BL	BL
(228)	BL	BL	BL	BL	BL
(229)	BL	BL	BL	BL	BL
(230)	BL	BL	BL	BL	BL
(231)	BL	BL	BL	BL	BL
(232)	BL	BL	BL	BL	BL
(233)	BL	BL	BL	BL	BL
(234)	BL	BL	BL	BL	BL
(235)	BL	BL	BL	BL	BL
(236)* ¹	OL(876542)	BL	BL	BL	---
(237)	BL	BL	BL	BL	---
(238)	BL	BL	BL	BL	BL
(239)	BL	BL	BL	BL	BL
(240)	BL	BL	BL	BL	---
(241)	BL	BL	BL	BL	---
(242)	BL	BL	BL	BL	BL
(243)	BL	BL	BL	BL	---
(244)	BL	BL	BL	BL	BL

TEST REPORT

Report No.: SZ2220421-15709E

Date: May 10, 2022

Page 26 of 47

Seq No.	Result				
	Pb	Cd	Hg	Cr	Br
(245)*	BL	BL	BL	BL	X
(246)	BL	BL	BL	BL	---
(247)	BL	BL	BL	BL	BL
(248)	BL	BL	BL	BL	BL
(249)	BL	BL	BL	BL	BL
(250)	BL	BL	BL	BL	BL
(251)	BL	BL	BL	BL	BL
(252)	BL	BL	BL	BL	BL
(253)	BL	BL	BL	BL	BL
(254)	BL	BL	BL	BL	BL
(255)	BL	BL	BL	BL	BL
(256)	BL	BL	BL	BL	BL
(257)	BL	BL	BL	BL	BL
(258)	BL	BL	BL	BL	---
(259)	BL	BL	BL	BL	BL
(260)	BL	BL	BL	BL	BL
(261)	BL	BL	BL	BL	BL
(262)	BL	BL	BL	BL	BL
(263)* ¹	OL(889211)	BL	BL	BL	---
(264)	BL	BL	BL	BL	---
(265)	BL	BL	BL	BL	BL
(266)	BL	BL	BL	BL	BL
(267)*	BL	BL	BL	BL	X
(268)	BL	BL	BL	BL	---
(269)	BL	BL	BL	BL	BL
(270)	BL	BL	BL	BL	BL
(271)	BL	BL	BL	BL	---
(272)*	BL	BL	BL	BL	X
(273)	BL	BL	BL	BL	---
(274)	BL	BL	BL	BL	---
(275)	BL	BL	BL	BL	BL

TEST REPORT

Report No.: SZ2220421-15709E

Date: May 10, 2022

Page 27 of 47

Seq No.	Result				
	Pb	Cd	Hg	Cr	Br
(276)	BL	BL	BL	BL	BL
(277)	BL	BL	BL	BL	BL
(278)	BL	BL	BL	BL	BL
(279)	BL	BL	BL	BL	BL
(280)	BL	BL	BL	BL	BL
(281)	BL	BL	BL	BL	BL
(282)	BL	BL	BL	BL	BL
(283)	BL	BL	BL	BL	BL
(284)	BL	BL	BL	BL	BL
(285)	BL	BL	BL	BL	BL
(286)	BL	BL	BL	BL	BL
(287)	BL	BL	BL	BL	BL
(288)	BL	BL	BL	BL	BL
(289)	BL	BL	BL	BL	BL
(290)* ¹	OL(903152)	BL	BL	BL	---
(291)	BL	BL	BL	BL	---
(292)	BL	BL	BL	BL	BL
(293)	BL	BL	BL	BL	BL
(294)	BL	BL	BL	BL	---
(295)	BL	BL	BL	BL	BL
(296)*	BL	BL	BL	BL	X
(297)	BL	BL	BL	BL	---
(298)	BL	BL	BL	BL	BL
(299)	BL	BL	BL	BL	BL
(300)	BL	BL	BL	BL	BL
(301)	BL	BL	BL	BL	BL
(302)	BL	BL	BL	BL	BL
(303)	BL	BL	BL	BL	BL
(304)	BL	BL	BL	BL	---
(305)	BL	BL	BL	BL	BL
(306)	BL	BL	BL	BL	BL

TEST REPORT

Report No.: SZ2220421-15709E

Date: May 10, 2022

Page 28 of 47

Seq No.	Result				
	Pb	Cd	Hg	Cr	Br
(307)	BL	BL	BL	BL	BL
(308)	BL	BL	BL	BL	BL
(309)	BL	BL	BL	BL	BL
(310)	BL	BL	BL	BL	BL
(311)	BL	BL	BL	BL	BL
(312)	BL	BL	BL	BL	BL
(313)* ¹	OL(865422)	BL	BL	BL	---
(314)	BL	BL	BL	BL	---
(315)	BL	BL	BL	BL	BL
(316)	BL	BL	BL	BL	BL
(317)	BL	BL	BL	BL	BL
(318)	BL	BL	BL	BL	BL
(319)	BL	BL	BL	BL	---
(320)	BL	BL	BL	BL	BL
(321)*	BL	BL	BL	BL	X
(322)	BL	BL	BL	BL	---
(323)	BL	BL	BL	BL	BL
(324)	BL	BL	BL	BL	---
(325)	BL	BL	BL	BL	---
(326)	BL	BL	BL	BL	BL
(327)	BL	BL	BL	BL	BL
(328)	BL	BL	BL	BL	BL
(329)	BL	BL	BL	BL	---
(330)	BL	BL	BL	BL	BL
(331)	BL	BL	BL	BL	BL
(332)	BL	BL	BL	BL	BL
(333)*	BL	BL	BL	BL	X
(334)	BL	BL	BL	BL	BL
(335)	BL	BL	BL	BL	BL
(336)	BL	BL	BL	BL	BL
(337)	BL	BL	BL	BL	BL

TEST REPORT

Report No.: SZ2220421-15709E

Date: May 10, 2022

Page 29 of 47

Seq No.	Result				
	Pb	Cd	Hg	Cr	Br
(338)	BL	BL	BL	BL	BL
(339)	BL	BL	BL	BL	BL
(340)	BL	BL	BL	BL	BL
(341)	BL	BL	BL	BL	BL
(342)	BL	BL	BL	BL	BL
(343)	BL	BL	BL	BL	BL
(344)	BL	BL	BL	BL	BL
(345)	BL	BL	BL	BL	BL
(346)	BL	BL	BL	BL	BL
(347)	BL	BL	BL	BL	BL
(348)	BL	BL	BL	BL	BL
(349)	BL	BL	BL	BL	BL
(350)	BL	BL	BL	BL	BL
(351)* ¹	OL(856129)	BL	BL	BL	---
(352)	BL	BL	BL	BL	---
(353)	BL	BL	BL	BL	BL
(354)	BL	BL	BL	BL	BL
(355)	BL	BL	BL	BL	BL
(356)	BL	BL	BL	BL	---
(357)	BL	BL	BL	BL	BL
(358)	BL	BL	BL	BL	---
(359)*	BL	BL	BL	BL	X
(360)	BL	BL	BL	BL	---
(361)	BL	BL	BL	BL	BL
(362)	BL	BL	BL	BL	BL
(363)	BL	BL	BL	BL	BL
(364)	BL	BL	BL	BL	BL
(365)	BL	BL	BL	BL	BL
(366)	BL	BL	BL	BL	BL
(367)	BL	BL	BL	BL	BL
(368)	BL	BL	BL	BL	BL

TEST REPORT

Report No.: SZ2220421-15709E

Date: May 10, 2022

Page 30 of 47

Seq No.	Result				
	Pb	Cd	Hg	Cr	Br
(369)	BL	BL	BL	BL	BL
(370)	BL	BL	BL	BL	BL
(371)	BL	BL	BL	BL	BL
(372)	BL	BL	BL	BL	BL
(373)	BL	BL	BL	BL	BL
(374)	BL	BL	BL	BL	BL
(375)* ¹	OL(889612)	BL	BL	BL	---
(376)	BL	BL	BL	BL	---
(377)	BL	BL	BL	BL	BL
(378)	BL	BL	BL	BL	BL
(379)	BL	BL	BL	BL	BL
(380)* ¹	OL(863024)	BL	BL	BL	---
(381)	BL	BL	BL	BL	---
(382)	BL	BL	BL	BL	BL
(383)	BL	BL	BL	BL	---
(384)	BL	BL	BL	BL	BL
(385)*	BL	BL	BL	BL	X
(386)	BL	BL	BL	BL	---
(387)	BL	BL	BL	BL	BL
(388)	BL	BL	BL	BL	BL
(389)	BL	BL	BL	BL	BL
(390)	BL	BL	BL	BL	BL
(391)	BL	BL	BL	BL	BL
(392)	BL	BL	BL	BL	BL
(393)	BL	BL	BL	BL	BL
(394)	BL	BL	BL	BL	BL
(395)	BL	BL	BL	BL	BL
(396)	BL	BL	BL	BL	BL
(397)	BL	BL	BL	BL	BL
(398)	BL	BL	BL	BL	BL
(399)	BL	BL	BL	BL	BL

TEST REPORT

Report No.: SZ2220421-15709E

Date: May 10, 2022

Page 31 of 47

Seq No.	Result				
	Pb	Cd	Hg	Cr	Br
(400)* ¹	OL(868453)	BL	BL	BL	---
(401)	BL	BL	BL	BL	---
(402)	BL	BL	BL	BL	BL
(403)	BL	BL	BL	BL	BL
(404)	BL	BL	BL	BL	---
(405)	BL	BL	BL	BL	BL
(406)*	BL	BL	BL	BL	X
(407)	BL	BL	BL	BL	---
(408)	BL	BL	BL	BL	BL
(409)	BL	BL	BL	BL	BL
(410)	BL	BL	BL	BL	BL
(411)	BL	BL	BL	BL	BL
(412)	BL	BL	BL	BL	BL
(413)	BL	BL	BL	BL	BL
(414)	BL	BL	BL	BL	BL
(415)	BL	BL	BL	BL	BL
(416)	BL	BL	BL	BL	BL
(417)	BL	BL	BL	BL	BL
(418)	BL	BL	BL	BL	BL
(419)	BL	BL	BL	BL	BL
(420)	BL	BL	BL	BL	BL
(421)	BL	BL	BL	BL	BL
(422)	BL	BL	BL	BL	BL
(423)	BL	BL	BL	BL	BL
(424)* ¹	OL(876749)	BL	BL	BL	---
(425)	BL	BL	BL	BL	---
(426)	BL	BL	BL	BL	BL
(427)	BL	BL	BL	BL	BL
(428)	BL	BL	BL	BL	BL
(429)	BL	BL	BL	BL	---
(430)*	BL	BL	BL	BL	X

TEST REPORT

Report No.: SZ2220421-15709E

Date: May 10, 2022

Page 32 of 47

Seq No.	Result				
	Pb	Cd	Hg	Cr	Br
(431)	BL	BL	BL	BL	---
(432)	BL	BL	BL	BL	BL
(433)	BL	BL	BL	BL	BL
(434)	BL	BL	BL	BL	BL
(435)	BL	BL	BL	BL	BL
(436)	BL	BL	BL	BL	BL
(437)	BL	BL	BL	BL	BL
(438)	BL	BL	BL	BL	BL
(439)	BL	BL	BL	BL	BL
(440)	BL	BL	BL	BL	BL
(441)	BL	BL	BL	BL	BL
(442)	BL	BL	BL	BL	BL
(443)	BL	BL	BL	BL	BL
(444)	BL	BL	BL	BL	BL
(445)	BL	BL	BL	BL	BL
(446)	BL	BL	BL	BL	BL
(447)	BL	BL	BL	BL	BL
(448)	BL	BL	BL	BL	BL
(449)* ¹	OL(859012)	BL	BL	BL	---
(450)	BL	BL	BL	BL	---
(451)	BL	BL	BL	BL	BL
(452)	BL	BL	BL	BL	BL
(453)	BL	BL	BL	BL	BL
(454)	BL	BL	BL	BL	---
(455)	BL	BL	BL	BL	---
(456)*	BL	BL	BL	BL	X
(457)	BL	BL	BL	BL	---
(458)	BL	BL	BL	BL	BL
(459)	BL	BL	BL	BL	BL
(460)	BL	BL	BL	BL	BL
(461)	BL	BL	BL	BL	BL

TEST REPORT

Report No.: SZ2220421-15709E

Date: May 10, 2022

Page 33 of 47

Seq No.	Result				
	Pb	Cd	Hg	Cr	Br
(462)	BL	BL	BL	BL	BL
(463)	BL	BL	BL	BL	BL
(464)	BL	BL	BL	BL	BL
(465)	BL	BL	BL	BL	BL
(466)	BL	BL	BL	BL	BL
(467)	BL	BL	BL	BL	BL
(468)	BL	BL	BL	BL	BL
(469)	BL	BL	BL	BL	BL
(470)* ¹	OL(901126)	BL	BL	BL	---
(471)	BL	BL	BL	BL	---
(472)	BL	BL	BL	BL	BL
(473)	BL	BL	BL	BL	BL
(474)	BL	BL	BL	BL	BL
(475)	BL	BL	BL	BL	---
(476)	BL	BL	BL	BL	BL
(477)	BL	BL	BL	BL	---
(478)	BL	BL	BL	BL	BL
(479)	BL	BL	BL	BL	---
(480)	BL	BL	BL	BL	BL
(481)	BL	BL	BL	BL	BL
(482)	BL	BL	BL	BL	---
(483)	BL	BL	BL	BL	BL
(484)	BL	BL	BL	BL	BL
(485)*	BL	BL	BL	BL	X
(486)	BL	BL	BL	BL	---
(487)	BL	BL	BL	BL	BL
(488)	BL	BL	BL	BL	---
(489)	BL	BL	BL	BL	---
(490)	BL	BL	BL	BL	BL
(491)	BL	BL	BL	BL	BL
(492)	BL	BL	BL	BL	---

TEST REPORT

Report No.: **SZ2220421-15709E**

Date: May 10, 2022

Page 34 of 47

Seq No.	Result				
	Pb	Cd	Hg	Cr	Br
(493)	BL	BL	BL	BL	BL
(494)	BL	BL	BL	BL	---
(495)	BL	BL	BL	BL	BL

Note:

--- = Not Applicable.

* = Screening by XRF and detected by chemical method. The test result of chemical method please refer to next pages.

*¹ = As claimed by the material declaration submitted by the client, the materials of the sample No.

33,54,78,104,126,130,154,158,184,208,212,236,263,290,313,351,375,380,400,424,449,470 are high melting temperature type solders. And according to RoHS directive 2011/65/EU and its amendments, Lead is exempted in high melting temperature type solders (i.e. lead-based alloys containing 85 % by weight or more lead).

TEST REPORT

Report No.: **SZ2220421-15709E**

Date: May 10, 2022

Page 35 of 47

Remark:

i Result were obtained by XRF for primary screening, and further chemical testing by ICP (for Cd, Pb, Hg), UV-Vis (for Cr(VI)) and GC-MS (for PBBs, PBDEs) are recommended to be performed, if the concentration exceeds the below warning value according to IEC62321-3-1:2013.

Element	Unit	Polymers	Metal	Composite Material
Cd	mg/kg	BL≤70-3σ<X <130+3σ≤OL	BL≤70-3σ<X <130+3σ≤OL	BL≤50-3σ<X <150+3σ≤OL
Pb	mg/kg	BL≤700-3σ<X <1300+3σ≤OL	BL≤700-3σ<X <1300+3σ≤OL	BL≤500-3σ<X <1500+3σ≤OL
Hg	mg/kg	BL≤700-3σ<X <1300+3σ≤OL	BL≤700-3σ<X <1300+3σ≤OL	BL≤500-3σ<X <1500+3σ≤OL
Cr	mg/kg	BL≤700-3σ<X	BL≤700-3σ<X	BL≤500-3σ<X
Br	mg/kg	BL≤300-3σ<X	--	BL≤250-3σ<X

Note:

BL = Below Limit

OL = Over Limit

IN / X = Inconclusive (questionable, need further chemical analysis)

ii The XRF screening test for RoHS elements – The reading may be different to the actual content in the sample be of non-uniformity composition.

iii The maximum permissible limit is quoted from the RoHS directive 2011/65/EU:

RoHS Restricted Substances	Maximum Concentration Value (mg/kg) (by weight in homogenous materials)
Cadmium (Cd)	100
Lead (Pb)	1000
Mercury (Hg)	1000
Hexavalent Chromium (Cr(VI))	1000
Polybrominated biphenyls (PBBs)	1000
Polybrominated diphenylethers (PBDEs)	1000

Disclaimers:

This XRF Screening report is for reference purposes only. The applicant shall make its/his/her own judgment as to whether the information provided in this XRF screening report is sufficient for its/his/her purposes.

The result shown in this XRF screening report will differ based on various factors, including but not limited to, the sample size, thickness, area, surface flatness, equipment parameters and matrix effect (e.g. plastic, rubber, metal, glass, ceramic etc.). Further wet chemical pre-treatment with relevant chemical equipment analysis are required to obtain quantitative data.

TEST REPORT

Report No.: SZ2220421-15709E

Date: May 10, 2022

Page 36 of 47

A.2 Wet Chemical Testing

A.2.1 PBBs & PBDEs content

Test method: IEC 62321-6:2015

Item	Unit	MDL	Result						Limit
			(16)	(39)	(60)	(108)	(136)	(166)	
Monobromobiphenyl (MonoBB)	mg/kg	5	N.D.	N.D.	N.D.	N.D.	N.D.	N.D.	-
Dibromobiphenyl(DiBB)	mg/kg	5	N.D.	N.D.	N.D.	N.D.	N.D.	N.D.	-
Tribromobiphenyl(TriBB)	mg/kg	5	N.D.	N.D.	N.D.	N.D.	N.D.	N.D.	-
Tetrabromobiphenyl(TetraBB)	mg/kg	5	N.D.	N.D.	N.D.	N.D.	N.D.	N.D.	-
Pentabromobiphenyl(PentaBB)	mg/kg	5	N.D.	N.D.	N.D.	N.D.	N.D.	N.D.	-
Hexabromobiphenyl(HexaBB)	mg/kg	5	N.D.	N.D.	N.D.	N.D.	N.D.	N.D.	-
Heptabromobiphenyl (HeptaBB)	mg/kg	5	N.D.	N.D.	N.D.	N.D.	N.D.	N.D.	-
Octabromobiphenyl(OctaBB)	mg/kg	5	N.D.	N.D.	N.D.	N.D.	N.D.	N.D.	-
Nonabromobiphenyl(NonaBB)	mg/kg	5	N.D.	N.D.	N.D.	N.D.	N.D.	N.D.	-
Decabromobiphenyl(DecaBB)	mg/kg	5	N.D.	N.D.	N.D.	N.D.	N.D.	N.D.	-
Monobromodiphenyl ether (MonoBDE)	mg/kg	5	N.D.	N.D.	N.D.	N.D.	N.D.	N.D.	-
Dibromodiphenyl ether (DiBDE)	mg/kg	5	N.D.	N.D.	N.D.	N.D.	N.D.	N.D.	-
Tribromodiphenyl ether (TriBDE)	mg/kg	5	N.D.	N.D.	N.D.	N.D.	N.D.	N.D.	-
Tetrabromodiphenyl ether (TetraBDE)	mg/kg	5	N.D.	N.D.	N.D.	N.D.	N.D.	N.D.	-
Pentabromodiphenyl ether (PentaBDE)	mg/kg	5	N.D.	N.D.	N.D.	N.D.	N.D.	N.D.	-
Hexabromodiphenyl ether (HexaBDE)	mg/kg	5	N.D.	N.D.	N.D.	N.D.	N.D.	N.D.	-
Heptabromodiphenyl ether (HeptaBDE)	mg/kg	5	N.D.	N.D.	N.D.	N.D.	N.D.	N.D.	-
Octabromodiphenyl ether (OctaBDE)	mg/kg	5	N.D.	N.D.	N.D.	N.D.	N.D.	N.D.	-
Nonabromodiphenyl ether (NonaBDE)	mg/kg	5	N.D.	N.D.	N.D.	N.D.	N.D.	N.D.	-
Decabromodiphenyl ether (DecaBDE)	mg/kg	5	N.D.	N.D.	N.D.	N.D.	N.D.	N.D.	-

TEST REPORT

Report No.: SZ2220421-15709E

Date: May 10, 2022

Page 37 of 47

Item	Unit	MDL	Result						Limit
			(16)	(39)	(60)	(108)	(136)	(166)	
sum of MonoBDE, DiBDE, TriBDE, TetraBDE, PentaBDE, HexaBDE, HeptaBDE, OctaBDE, NonaBDE, DecaBDE	mg/kg	-	/	/	/	/	/	/	1000
sum of MonoBB, DiBB, TriBB, TetraBB, PentaBB, HexaBB, HeptaBB, OctaBB, NonaBB, DecaBB	mg/kg	-	/	/	/	/	/	/	1000
Conclusion	/	/	Pass	Pass	Pass	Pass	Pass	Pass	/

Item	Unit	MDL	Result						Limit
			(190)	(217)	(245)	(267)	(272)	(296)	
Monobromobiphenyl (MonoBB)	mg/kg	5	N.D.	N.D.	N.D.	N.D.	N.D.	N.D.	-
Dibromobiphenyl (DiBB)	mg/kg	5	N.D.	N.D.	N.D.	N.D.	N.D.	N.D.	-
Tribromobiphenyl (TriBB)	mg/kg	5	N.D.	N.D.	N.D.	N.D.	N.D.	N.D.	-
Tetrabromobiphenyl (TetraBB)	mg/kg	5	N.D.	N.D.	N.D.	N.D.	N.D.	N.D.	-
Pentabromobiphenyl (PentaBB)	mg/kg	5	N.D.	N.D.	N.D.	N.D.	N.D.	N.D.	-
Hexabromobiphenyl (HexaBB)	mg/kg	5	N.D.	N.D.	N.D.	N.D.	N.D.	N.D.	-
Heptabromobiphenyl (HeptaBB)	mg/kg	5	N.D.	N.D.	N.D.	N.D.	N.D.	N.D.	-
Octabromobiphenyl (OctaBB)	mg/kg	5	N.D.	N.D.	N.D.	N.D.	N.D.	N.D.	-
Nonabromobiphenyl (NonaBB)	mg/kg	5	N.D.	N.D.	N.D.	N.D.	N.D.	N.D.	-
Decabromobiphenyl (DecaBB)	mg/kg	5	N.D.	N.D.	N.D.	N.D.	N.D.	N.D.	-
Monobromodiphenyl ether (MonoBDE)	mg/kg	5	N.D.	N.D.	N.D.	N.D.	N.D.	N.D.	-
Dibromodiphenyl ether (DiBDE)	mg/kg	5	N.D.	N.D.	N.D.	N.D.	N.D.	N.D.	-
Tribromodiphenyl ether (TriBDE)	mg/kg	5	N.D.	N.D.	N.D.	N.D.	N.D.	N.D.	-
Tetrabromodiphenyl ether (TetraBDE)	mg/kg	5	N.D.	N.D.	N.D.	N.D.	N.D.	N.D.	-
Pentabromodiphenyl ether (PentaBDE)	mg/kg	5	N.D.	N.D.	N.D.	N.D.	N.D.	N.D.	-
Hexabromodiphenyl ether (HexaBDE)	mg/kg	5	N.D.	N.D.	N.D.	N.D.	N.D.	N.D.	-
Heptabromodiphenyl ether (HeptaBDE)	mg/kg	5	N.D.	N.D.	N.D.	N.D.	N.D.	N.D.	-

TEST REPORT

Report No.: SZ2220421-15709E

Date: May 10, 2022

Page 38 of 47

Item	Unit	MDL	Result						Limit
			(190)	(217)	(245)	(267)	(272)	(296)	
Octabromodiphenyl ether (OctaBDE)	mg/kg	5	N.D.	N.D.	N.D.	N.D.	N.D.	N.D.	-
Nonabromodiphenyl ether (NonaBDE)	mg/kg	5	N.D.	N.D.	N.D.	N.D.	N.D.	N.D.	-
Decabromodiphenyl ether (DecaBDE)	mg/kg	5	N.D.	N.D.	N.D.	N.D.	N.D.	N.D.	-
sum of MonoBDE, DiBDE, TriBDE, TetraBDE, PentaBDE, HexaBDE, HeptaBDE, OctaBDE, NonaBDE, DecaBDE	mg/kg	-	/	/	/	/	/	/	1000
sum of MonoBB, DiBB, TriBB, TetraBB, PentaBB, HexaBB, HeptaBB, OctaBB, NonaBB, DecaBB	mg/kg	-	/	/	/	/	/	/	1000
Conclusion	/	/	Pass	Pass	Pass	Pass	Pass	Pass	/

Item	Unit	MDL	Result				Limit
			(321)	(333)	(359)	(385)	
Monobromobiphenyl (MonoBB)	mg/kg	5	N.D.	N.D.	N.D.	N.D.	-
Dibromobiphenyl (DiBB)	mg/kg	5	N.D.	N.D.	N.D.	N.D.	-
Tribromobiphenyl (TriBB)	mg/kg	5	N.D.	N.D.	N.D.	N.D.	-
Tetrabromobiphenyl (TetraBB)	mg/kg	5	N.D.	N.D.	N.D.	N.D.	-
Pentabromobiphenyl (PentaBB)	mg/kg	5	N.D.	N.D.	N.D.	N.D.	-
Hexabromobiphenyl (HexaBB)	mg/kg	5	N.D.	N.D.	N.D.	N.D.	-
Heptabromobiphenyl (HeptaBB)	mg/kg	5	N.D.	N.D.	N.D.	N.D.	-
Octabromobiphenyl (OctaBB)	mg/kg	5	N.D.	N.D.	N.D.	N.D.	-
Nonabromobiphenyl (NonaBB)	mg/kg	5	N.D.	N.D.	N.D.	N.D.	-
Decabromobiphenyl (DecaBB)	mg/kg	5	N.D.	N.D.	N.D.	N.D.	-
Monobromodiphenyl ether (MonoBDE)	mg/kg	5	N.D.	N.D.	N.D.	N.D.	-
Dibromodiphenyl ether (DiBDE)	mg/kg	5	N.D.	N.D.	N.D.	N.D.	-
Tribromodiphenyl ether (TriBDE)	mg/kg	5	N.D.	N.D.	N.D.	N.D.	-
Tetrabromodiphenyl ether (TetraBDE)	mg/kg	5	N.D.	N.D.	N.D.	N.D.	-

TEST REPORT

Report No.: SZ2220421-15709E

Date: May 10, 2022

Page 39 of 47

Item	Unit	MDL	Result				Limit
			(321)	(333)	(359)	(385)	
Pentabromodiphenyl ether (PentaBDE)	mg/kg	5	N.D.	N.D.	N.D.	N.D.	-
Hexabromodiphenyl ether (HexaBDE)	mg/kg	5	N.D.	N.D.	N.D.	N.D.	-
Heptabromodiphenyl ether (HeptaBDE)	mg/kg	5	N.D.	N.D.	N.D.	N.D.	-
Octabromodiphenyl ether (OctaBDE)	mg/kg	5	N.D.	N.D.	N.D.	N.D.	-
Nonabromodiphenyl ether (NonaBDE)	mg/kg	5	N.D.	N.D.	N.D.	N.D.	-
Decabromodiphenyl ether (DecaBDE)	mg/kg	5	N.D.	N.D.	N.D.	N.D.	-
sum of MonoBDE, DiBDE, TriBDE, TetraBDE, PentaBDE, HexaBDE, HeptaBDE, OctaBDE, NonaBDE, DecaBDE	mg/kg	-	/	/	/	/	1000
sum of MonoBB, DiBB, TriBB, TetraBB, PentaBB, HexaBB, HeptaBB, OctaBB, NonaBB, DecaBB	mg/kg	-	/	/	/	/	1000
Conclusion	/	/	Pass	Pass	Pass	Pass	/

Item	Unit	MDL	Result				Limit
			(406)	(430)	(456)	(485)	
Monobromobiphenyl (MonoBB)	mg/kg	5	N.D.	N.D.	N.D.	N.D.	-
Dibromobiphenyl (DiBB)	mg/kg	5	N.D.	N.D.	N.D.	N.D.	-
Tribromobiphenyl (TriBB)	mg/kg	5	N.D.	N.D.	N.D.	N.D.	-
Tetrabromobiphenyl (TetraBB)	mg/kg	5	N.D.	N.D.	N.D.	N.D.	-
Pentabromobiphenyl (PentaBB)	mg/kg	5	N.D.	N.D.	N.D.	N.D.	-
Hexabromobiphenyl (HexaBB)	mg/kg	5	N.D.	N.D.	N.D.	N.D.	-
Heptabromobiphenyl (HeptaBB)	mg/kg	5	N.D.	N.D.	N.D.	N.D.	-
Octabromobiphenyl (OctaBB)	mg/kg	5	N.D.	N.D.	N.D.	N.D.	-
Nonabromobiphenyl (NonaBB)	mg/kg	5	N.D.	N.D.	N.D.	N.D.	-
Decabromobiphenyl (DecaBB)	mg/kg	5	N.D.	N.D.	N.D.	N.D.	-
Monobromodiphenyl ether (MonoBDE)	mg/kg	5	N.D.	N.D.	N.D.	N.D.	-

TEST REPORT

Report No.: SZ2220421-15709E

Date: May 10, 2022

Page 40 of 47

Item	Unit	MDL	Result				Limit
			(406)	(430)	(456)	(485)	
Dibromodiphenyl ether (DiBDE)	mg/kg	5	N.D.	N.D.	N.D.	N.D.	-
Tribromodiphenyl ether (TriBDE)	mg/kg	5	N.D.	N.D.	N.D.	N.D.	-
Tetrabromodiphenyl ether (TetraBDE)	mg/kg	5	N.D.	N.D.	N.D.	N.D.	-
Pentabromodiphenyl ether (PentaBDE)	mg/kg	5	N.D.	N.D.	N.D.	N.D.	-
Hexabromodiphenyl ether (HexaBDE)	mg/kg	5	N.D.	N.D.	N.D.	N.D.	-
Heptabromodiphenyl ether (HeptaBDE)	mg/kg	5	N.D.	N.D.	N.D.	N.D.	-
Octabromodiphenyl ether (OctaBDE)	mg/kg	5	N.D.	N.D.	N.D.	N.D.	-
Nonabromodiphenyl ether (NonaBDE)	mg/kg	5	N.D.	N.D.	N.D.	N.D.	-
Decabromodiphenyl ether (DecaBDE)	mg/kg	5	N.D.	N.D.	N.D.	N.D.	-
sum of MonoBDE, DiBDE, TriBDE, TetraBDE, PentaBDE, HexaBDE, HeptaBDE, OctaBDE, NonaBDE, DecaBDE	mg/kg	-	/	/	/	/	1000
sum of MonoBB, DiBB, TriBB, TetraBB, PentaBB, HexaBB, HeptaBB, OctaBB, NonaBB, DecaBB	mg/kg	-	/	/	/	/	1000
Conclusion	/	/	Pass	Pass	Pass	Pass	/

A.3 Phthalates (DBP, BBP, DEHP, DIBP) content

Test method: IEC 62321-8:2017

Item	Unit	MDL	Result						Limit
			(1)+(20)+(43)	(3)+(19)+(22)	(4)+(5)+(23)	(9)+(10)+(11)	(12)+(13)+(14)	(15)+(28)+(29)	
Dibutyl Phthalate (DBP)	mg/kg	30	N.D.	N.D.	N.D.	N.D.	N.D.	N.D.	1000
Benzyl Butyl Phthalate (BBP)	mg/kg	30	N.D.	N.D.	N.D.	N.D.	N.D.	N.D.	1000
Bis-(2-ethylhexyl) Phthalate (DEHP)	mg/kg	30	N.D.	N.D.	N.D.	N.D.	N.D.	N.D.	1000
Diisobutyl phthalate (DIBP)	mg/kg	30	N.D.	N.D.	N.D.	N.D.	N.D.	N.D.	1000
Conclusion	/	/	Pass	Pass	Pass	Pass	Pass	Pass	/

TEST REPORT

Report No.: SZ2220421-15709E

Date: May 10, 2022

Page 41 of 47

Item	Unit	MDL	Result						Limit
			(16)+(39)+(60)	(24)+(46)+(47)	(30)+(31)+(35)	(32)+(42)+(45)	(36)+(37)+(38)	(51)+(52)+(56)	
Dibutyl Phthalate(DBP)	mg/kg	30	N.D.	N.D.	N.D.	N.D.	N.D.	N.D.	1000
Benzyl Butyl Phthalate(BBP)	mg/kg	30	N.D.	N.D.	N.D.	N.D.	N.D.	N.D.	1000
Bis-(2-ethylhexyl) Phthalate (DEHP)	mg/kg	30	N.D.	N.D.	N.D.	N.D.	N.D.	N.D.	1000
Diisobutyl phthalate(DIBP)	mg/kg	30	N.D.	N.D.	N.D.	N.D.	N.D.	N.D.	1000
Conclusion	/	/	Pass	Pass	Pass	Pass	Pass	Pass	/

Item	Unit	MDL	Result						Limit
			(53)+(63)+(67)	(57)+(58)+(59)	(64)+(88)+(111)	(65)+(334)+(458)	(68)+(69)+(92)	(73)+(74)+(75)	
Dibutyl Phthalate(DBP)	mg/kg	30	N.D.	N.D.	N.D.	N.D.	N.D.	N.D.	1000
Benzyl Butyl Phthalate(BBP)	mg/kg	30	N.D.	N.D.	N.D.	N.D.	N.D.	N.D.	1000
Bis-(2-ethylhexyl) Phthalate (DEHP)	mg/kg	30	N.D.	N.D.	N.D.	N.D.	N.D.	N.D.	1000
Diisobutyl phthalate(DIBP)	mg/kg	30	N.D.	N.D.	N.D.	N.D.	N.D.	N.D.	1000
Conclusion	/	/	Pass	Pass	Pass	Pass	Pass	Pass	/

Item	Unit	MDL	Result						Limit
			(76)+(77)+(80)	(81)+(82)+(83)	(84)+(108)+(136)	(87)+(91)+(99)	(89)+(112)+(140)	(93)+(115)+(116)	
Dibutyl Phthalate(DBP)	mg/kg	30	N.D.	N.D.	N.D.	N.D.	N.D.	N.D.	1000
Benzyl Butyl Phthalate(BBP)	mg/kg	30	N.D.	N.D.	N.D.	N.D.	N.D.	N.D.	1000
Bis-(2-ethylhexyl) Phthalate (DEHP)	mg/kg	30	N.D.	N.D.	N.D.	N.D.	N.D.	N.D.	1000
Diisobutyl phthalate(DIBP)	mg/kg	30	N.D.	N.D.	N.D.	N.D.	N.D.	N.D.	1000
Conclusion	/	/	Pass	Pass	Pass	Pass	Pass	Pass	/

Item	Unit	MDL	Result						Limit
			(97)+(98)+(100)	(101)+(102)+(106)	(103)+(114)+(120)	(107)+(110)+(121)	(122)+(123)+(124)	(125)+(129)+(133)	
Dibutyl Phthalate(DBP)	mg/kg	30	N.D.	N.D.	N.D.	N.D.	N.D.	N.D.	1000
Benzyl Butyl Phthalate(BBP)	mg/kg	30	N.D.	N.D.	N.D.	N.D.	N.D.	N.D.	1000
Bis-(2-ethylhexyl) Phthalate (DEHP)	mg/kg	30	N.D.	N.D.	N.D.	N.D.	N.D.	N.D.	1000
Diisobutyl phthalate(DIBP)	mg/kg	30	N.D.	N.D.	N.D.	N.D.	N.D.	N.D.	1000
Conclusion	/	/	Pass	Pass	Pass	Pass	Pass	Pass	/

TEST REPORT

Report No.: SZ2220421-15709E

Date: May 10, 2022

Page 42 of 47

Item	Unit	MDL	Result						Limit
			(128)+(132) +(138)	(139)+(168) +(192)	(142)+(148) +(153)	(143)+(144) +(172)	(149)+(150) +(151)	(152)+(156) +(160)	
Dibutyl Phthalate(DBP)	mg/kg	30	N.D.	N.D.	N.D.	N.D.	N.D.	N.D.	1000
Benzyl Butyl Phthalate(BBP)	mg/kg	30	N.D.	N.D.	N.D.	N.D.	N.D.	N.D.	1000
Bis-(2-ethylhexyl) Phthalate (DEHP)	mg/kg	30	N.D.	N.D.	N.D.	N.D.	N.D.	N.D.	1000
Diisobutyl phthalate(DIBP)	mg/kg	30	N.D.	N.D.	N.D.	N.D.	N.D.	N.D.	1000
Conclusion	/	/	Pass	Pass	Pass	Pass	Pass	Pass	/

Item	Unit	MDL	Result						Limit
			(157)+(161) +(164)	(166)+(190) +(217)	(169)+(193) +(220)	(171)+(179) +(183)	(173)+(196) +(197)	(177)+(178) +(180)	
Dibutyl Phthalate(DBP)	mg/kg	30	N.D.	N.D.	N.D.	N.D.	N.D.	N.D.	1000
Benzyl Butyl Phthalate(BBP)	mg/kg	30	N.D.	N.D.	N.D.	N.D.	N.D.	N.D.	1000
Bis-(2-ethylhexyl) Phthalate (DEHP)	mg/kg	30	N.D.	N.D.	N.D.	N.D.	N.D.	N.D.	1000
Diisobutyl phthalate(DIBP)	mg/kg	30	N.D.	N.D.	N.D.	N.D.	N.D.	N.D.	1000
Conclusion	/	/	Pass	Pass	Pass	Pass	Pass	Pass	/

Item	Unit	MDL	Result						Limit
			(181)+(182) +(186)	(187)+(198) +(203)	(189)+(195) +(202)	(204)+(205) +(206)	(207)+(211) +(216)	(210)+(214) +(226)	
Dibutyl Phthalate(DBP)	mg/kg	30	N.D.	N.D.	N.D.	N.D.	N.D.	N.D.	1000
Benzyl Butyl Phthalate(BBP)	mg/kg	30	N.D.	N.D.	N.D.	N.D.	N.D.	N.D.	1000
Bis-(2-ethylhexyl) Phthalate (DEHP)	mg/kg	30	N.D.	N.D.	N.D.	N.D.	N.D.	N.D.	1000
Diisobutyl phthalate(DIBP)	mg/kg	30	N.D.	N.D.	N.D.	N.D.	N.D.	N.D.	1000
Conclusion	/	/	Pass	Pass	Pass	Pass	Pass	Pass	/

Item	Unit	MDL	Result						Limit
			(222)+(231) +(235)	(223)+(224) +(251)	(230)+(232) +(233)	(234)+(238) +(242)	(239)+(244) +(250)	(245)+(272) +(296)	
Dibutyl Phthalate(DBP)	mg/kg	30	N.D.	N.D.	N.D.	N.D.	N.D.	N.D.	1000
Benzyl Butyl Phthalate(BBP)	mg/kg	30	N.D.	N.D.	N.D.	N.D.	N.D.	N.D.	1000
Bis-(2-ethylhexyl) Phthalate (DEHP)	mg/kg	30	N.D.	N.D.	N.D.	N.D.	N.D.	N.D.	1000
Diisobutyl phthalate(DIBP)	mg/kg	30	N.D.	N.D.	N.D.	N.D.	N.D.	N.D.	1000
Conclusion	/	/	Pass	Pass	Pass	Pass	Pass	Pass	/

TEST REPORT

Report No.: SZ2220421-15709E

Date: May 10, 2022

Page 43 of 47

Item	Unit	MDL	Result						Limit
			(247)	(248)+(275) +(299)	(252)+(278) +(279)	(256)+(262) +(266)	(257)+(259) +(260)	(261)+(265) +(269)	
Dibutyl Phthalate(DBP)	mg/kg	30	N.D.	N.D.	N.D.	N.D.	N.D.	N.D.	1000
Benzyl Butyl Phthalate(BBP)	mg/kg	30	N.D.	N.D.	N.D.	N.D.	N.D.	N.D.	1000
Bis-(2-ethylhexyl) Phthalate (DEHP)	mg/kg	30	N.D.	N.D.	N.D.	N.D.	N.D.	N.D.	1000
Diisobutyl phthalate(DIBP)	mg/kg	30	N.D.	N.D.	N.D.	N.D.	N.D.	N.D.	1000
Conclusion	/	/	Pass	Pass	Pass	Pass	Pass	Pass	/

Item	Unit	MDL	Result						Limit
			(267)+(456) +(485)	(270)+(277) +(285)	(283)+(284) +(286)	(287)+(288) +(292)	(289)+(295) +(301)	(293)	
Dibutyl Phthalate(DBP)	mg/kg	30	N.D.	N.D.	N.D.	N.D.	N.D.	N.D.	1000
Benzyl Butyl Phthalate(BBP)	mg/kg	30	N.D.	N.D.	N.D.	N.D.	N.D.	N.D.	1000
Bis-(2-ethylhexyl) Phthalate (DEHP)	mg/kg	30	N.D.	N.D.	N.D.	N.D.	N.D.	N.D.	1000
Diisobutyl phthalate(DIBP)	mg/kg	30	N.D.	N.D.	N.D.	N.D.	N.D.	N.D.	1000
Conclusion	/	/	Pass	Pass	Pass	Pass	Pass	Pass	/

Item	Unit	MDL	Result						Limit
			(298)+(336) +(361)	(302)+(303) +(332)	(308)+(309) +(310)	(311)+(315) +(316)	(312)+(320) +(323)	(317)+(318) +(335)	
Dibutyl Phthalate(DBP)	mg/kg	30	N.D.	N.D.	N.D.	N.D.	N.D.	N.D.	1000
Benzyl Butyl Phthalate(BBP)	mg/kg	30	N.D.	N.D.	N.D.	N.D.	N.D.	N.D.	1000
Bis-(2-ethylhexyl) Phthalate (DEHP)	mg/kg	30	N.D.	N.D.	N.D.	N.D.	N.D.	N.D.	1000
Diisobutyl phthalate(DIBP)	mg/kg	30	N.D.	N.D.	N.D.	N.D.	N.D.	N.D.	1000
Conclusion	/	/	Pass	Pass	Pass	Pass	Pass	Pass	/

Item	Unit	MDL	Result						Limit
			(321)+(333) +(359)	(327)+(328)	(330)+(339) +(346)	(337)+(362) +(388)	(340)+(341) +(365)	(345)+(347) +(348)	
Dibutyl Phthalate(DBP)	mg/kg	30	N.D.	N.D.	N.D.	N.D.	N.D.	N.D.	1000
Benzyl Butyl Phthalate(BBP)	mg/kg	30	N.D.	N.D.	N.D.	N.D.	N.D.	N.D.	1000
Bis-(2-ethylhexyl) Phthalate (DEHP)	mg/kg	30	N.D.	N.D.	N.D.	N.D.	N.D.	N.D.	1000
Diisobutyl phthalate(DIBP)	mg/kg	30	N.D.	N.D.	N.D.	N.D.	N.D.	N.D.	1000
Conclusion	/	/	Pass	Pass	Pass	Pass	Pass	Pass	/

TEST REPORT

Report No.: SZ2220421-15709E

Date: May 10, 2022

Page 44 of 47

Item	Unit	MDL	Result						Limit
			(349)+(353) +(354)	(350)+(355) +(357)	(364)+(374) +(379)	(366)+(391) +(392)	(370)+(371) +(372)	(373)+(377) +(378)	
Dibutyl Phthalate(DBP)	mg/kg	30	N.D.	N.D.	N.D.	N.D.	N.D.	N.D.	1000
Benzyl Butyl Phthalate(BBP)	mg/kg	30	N.D.	N.D.	N.D.	N.D.	N.D.	N.D.	1000
Bis-(2-ethylhexyl) Phthalate (DEHP)	mg/kg	30	N.D.	N.D.	N.D.	N.D.	N.D.	N.D.	1000
Diisobutyl phthalate(DIBP)	mg/kg	30	N.D.	N.D.	N.D.	N.D.	N.D.	N.D.	1000
Conclusion	/	/	Pass	Pass	Pass	Pass	Pass	Pass	/

Item	Unit	MDL	Result						Limit
			(382)+(396) +(397)	(384)+(390) +(399)	(385)+(406) +(430)	(387)+(409) +(433)	(398)+(403) +(408)	(402)+(418) +(420)	
Dibutyl Phthalate(DBP)	mg/kg	30	N.D.	N.D.	N.D.	N.D.	N.D.	N.D.	1000
Benzyl Butyl Phthalate(BBP)	mg/kg	30	N.D.	N.D.	N.D.	N.D.	N.D.	N.D.	1000
Bis-(2-ethylhexyl) Phthalate (DEHP)	mg/kg	30	N.D.	N.D.	N.D.	N.D.	N.D.	N.D.	1000
Diisobutyl phthalate(DIBP)	mg/kg	30	N.D.	N.D.	N.D.	N.D.	N.D.	N.D.	1000
Conclusion	/	/	Pass	Pass	Pass	Pass	Pass	Pass	/

Item	Unit	MDL	Result						Limit
			(405)+(412) +(419)	(410)+(434)	(413)+(414) +(437)	(421)+(422) +(426)	(423)+(428) +(436)	(427)+(432) +(442)	
Dibutyl Phthalate(DBP)	mg/kg	30	N.D.	N.D.	N.D.	N.D.	N.D.	N.D.	1000
Benzyl Butyl Phthalate(BBP)	mg/kg	30	N.D.	N.D.	N.D.	N.D.	N.D.	N.D.	1000
Bis-(2-ethylhexyl) Phthalate (DEHP)	mg/kg	30	N.D.	N.D.	N.D.	N.D.	N.D.	N.D.	1000
Diisobutyl phthalate(DIBP)	mg/kg	30	N.D.	N.D.	N.D.	N.D.	N.D.	N.D.	1000
Conclusion	/	/	Pass	Pass	Pass	Pass	Pass	Pass	/

Item	Unit	MDL	Result						Limit
			(438)+(461) +(462)	(443)+(448) +(453)	(444)+(445) +(446)	(447)+(451) +(452)	(460)+(469) +(474)	(466)+(467) +(468)	
Dibutyl Phthalate(DBP)	mg/kg	30	N.D.	N.D.	N.D.	N.D.	N.D.	N.D.	1000
Benzyl Butyl Phthalate(BBP)	mg/kg	30	N.D.	N.D.	N.D.	N.D.	N.D.	N.D.	1000
Bis-(2-ethylhexyl) Phthalate (DEHP)	mg/kg	30	N.D.	N.D.	N.D.	N.D.	N.D.	N.D.	1000
Diisobutyl phthalate(DIBP)	mg/kg	30	N.D.	N.D.	N.D.	N.D.	N.D.	N.D.	1000
Conclusion	/	/	Pass	Pass	Pass	Pass	Pass	Pass	/

TEST REPORT

Report No.: SZ2220421-15709E

Date: May 10, 2022

Page 45 of 47

Item	Unit	MDL	Result				Limit
			(472)+(473)+(484)	(476)+(478)+(483)	(480)	(481)	
Dibutyl Phthalate(DBP)	mg/kg	30	N.D.	N.D.	N.D.	N.D.	1000
Benzyl Butyl Phthalate(BBP)	mg/kg	30	N.D.	N.D.	N.D.	N.D.	1000
Bis-(2-ethylhexyl) Phthalate (DEHP)	mg/kg	30	N.D.	N.D.	N.D.	84	1000
Diisobutyl phthalate(DIBP)	mg/kg	30	N.D.	N.D.	N.D.	N.D.	1000
Conclusion	/	/	Pass	Pass	Pass	Pass	/

Item	Unit	MDL	Result			Limit
			(487)+(490)+(495)	(491)	(493)	
Dibutyl Phthalate(DBP)	mg/kg	30	N.D.	N.D.	N.D.	1000
Benzyl Butyl Phthalate(BBP)	mg/kg	30	N.D.	N.D.	N.D.	1000
Bis-(2-ethylhexyl) Phthalate (DEHP)	mg/kg	30	N.D.	N.D.	N.D.	1000
Diisobutyl phthalate(DIBP)	mg/kg	30	N.D.	N.D.	N.D.	1000
Conclusion	/	/	Pass	Pass	Pass	/

Note:

- N.D.= Not Detected or less than MDL
- MDL = Method Detection Limit
- "+" = Composite testing.
- The Result less than MDL are not taken into account while calculating the sum contents.

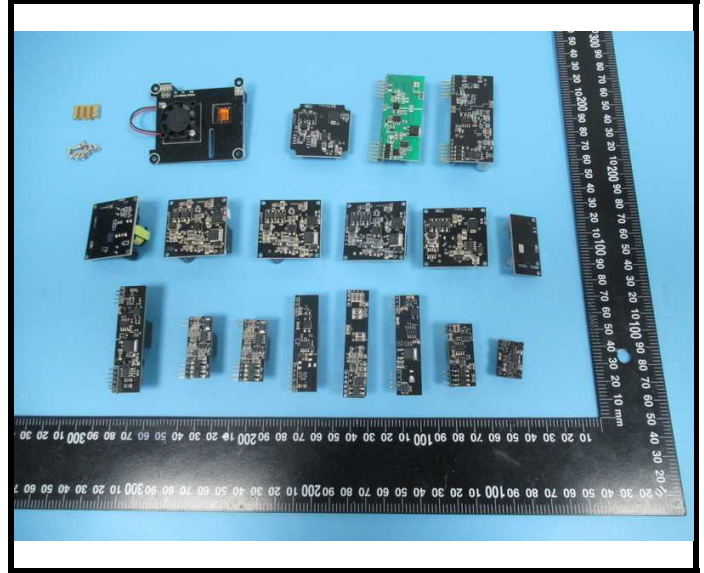
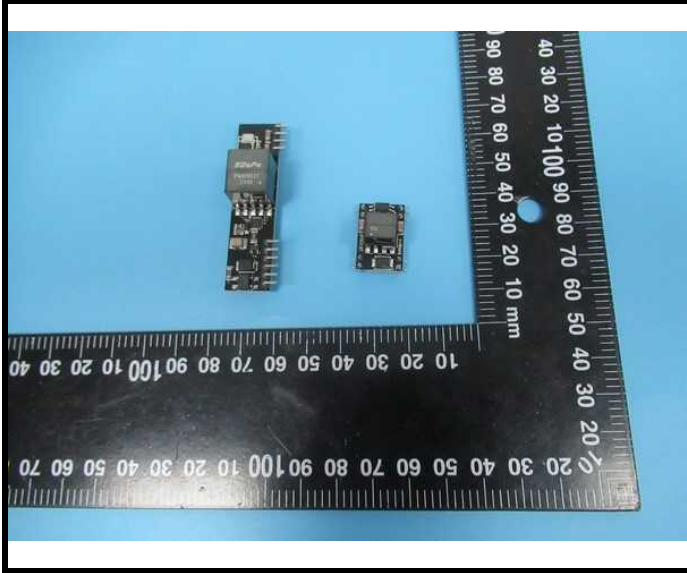
TEST REPORT

Report No.: SZ2220421-15709E

Date: May 10, 2022

Page 46 of 47

Photograph of Sample



BACL authenticate the photo on original report only

TEST REPORT

Report No.: SZ2220421-15709E

Date: May 10, 2022

Page 47 of 47

Statement:

- 1.This report cannot be reproduced except in full, without prior written approval of the Company.
- 2.Unless otherwise stated the results shown in this test report refer only to the sample(s) tested and such sample(s) are retained for 30 days only.
- 3.This report is valid only with a valid digital signature. The digital signature may be available only under the Adobe software above version 7.0.
- 4.Otherwise required by the applicant or Product Regulations, Decision Rule in this report did not consider the uncertainty.
- 5.The information which provided by the applicant, such as sample description, sample name, material component, style/item No. , P.O. No. , manufacturer, age phase, the laboratory is not responsible for its authenticity and this information can affect the validity of the result in the test report.
- 6.The test samples were in good condition before testing.

*** End of Report ***